

# Instructions to project proponent

- Review speakers notes on slides for additional instructions



# Dominguez Channel Parkway BMPs Prioritization Project

Funding Program (Infrastructure Program/Technical Resources Program)

Fiscal Year 2024-2025

South Santa Monica Bay

Project Lead(s): City of Torrance

Presenter(s): Larry Tortuya & Wilson Mendoza

Previously Awarded TRP – Yes



# Project Overview

This multi-benefit dry weather capture project will improve water quality in the Dominguez Channel by reducing pollutant loading due to dry-weather runoff.

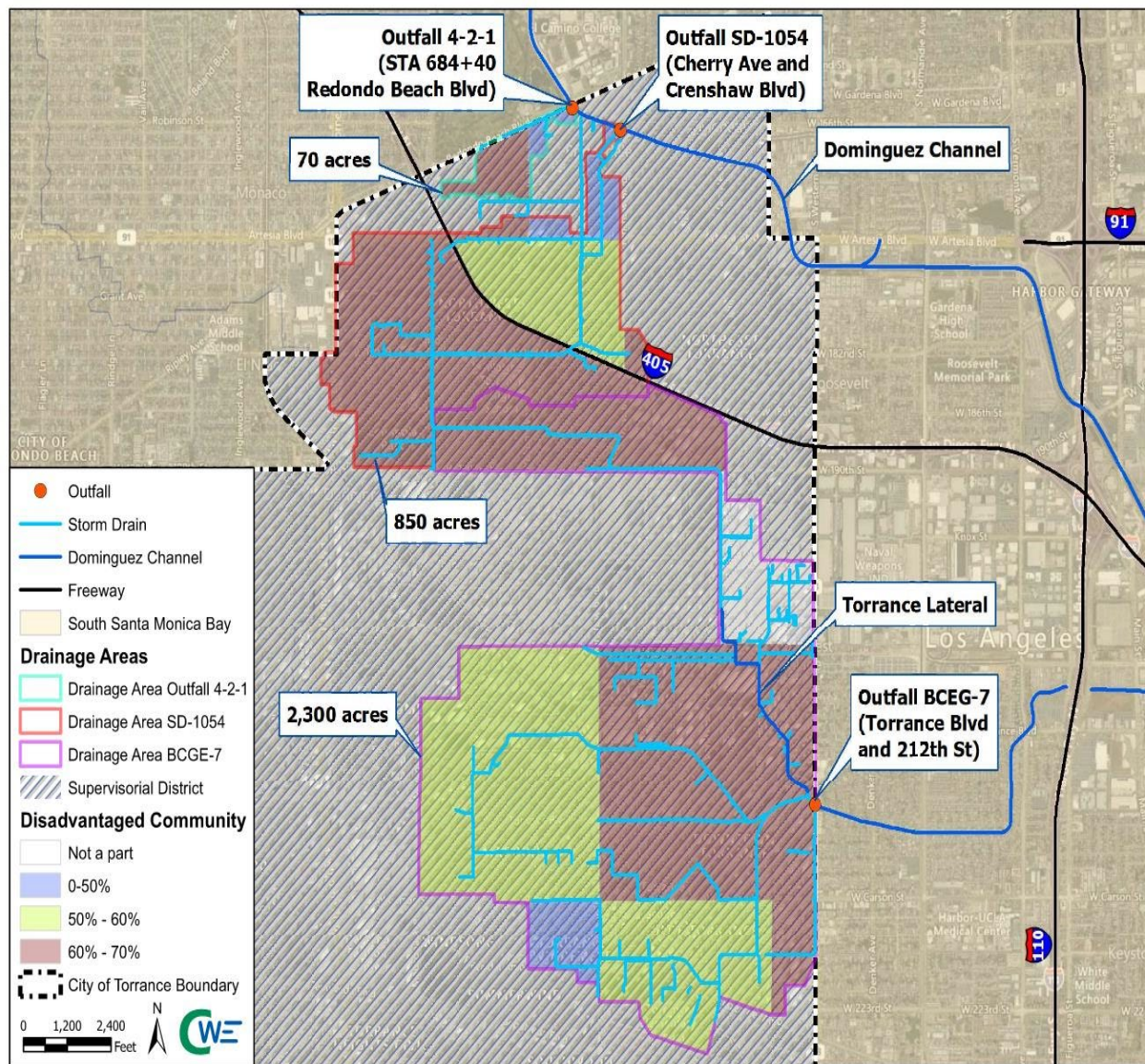
- Primary Objective: Improve water quality at the Dominguez Channel and Torrance Lateral.
- Secondary Objectives: Research & develop potential alternatives to catch basin inserts.
- Project Status: Planning, Design, Construction, and Bid/Award.
- Total Funding Requested: \$5,007,374.00







# Project Location



- Map(s) showing:
  - City of Torrance
  - Watershed Area: South Santa Monica Bay
  - Capture Area: 4,350 ac
  - Majority of Watersheds in 50-70% DAC Areas



# Project Background

- Project Locations Evaluated:
  - Locally and Regionally
    - Consolidate maintenance needs
    - Comply with Pollutant Load Reduction Targets
- Minimize significant dry weather discharge to prioritized outfalls.
- Beach Cities EWMP includes this project
- Reduction in bacteria pollutant for City of Torrance
- Project complies with County displacement policies/Anti-displacement requirements.



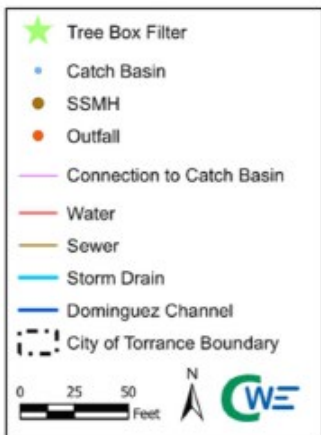
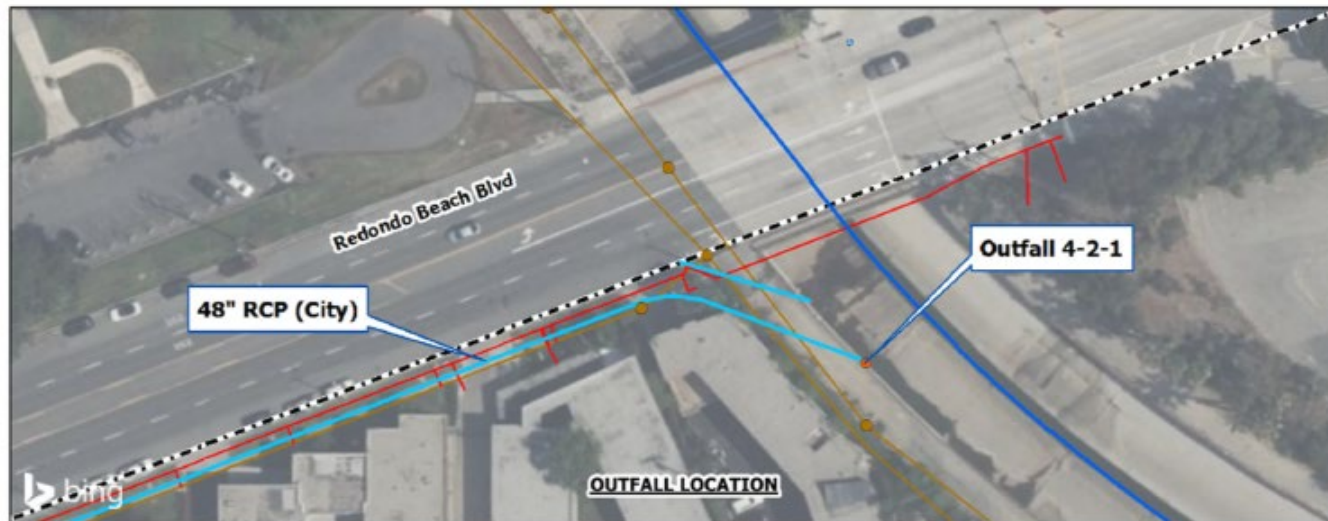
# Partners

- Reached out to Caltrans as potential partner
- Public Outreach targeted for next phase
- Potential partnerships:
  - Residents
  - Local Businesses
  - Community-based organizations
  - Non-profit organizations
- Charles Wilson Park
  - Potential partners - Torrance Farmers Market
  - Educational outreach
  - Community engagement





# Project Details



- Outfall 4-2-1
  - Includes two City owned catch basins
  - Area of three priority watersheds
  - Tree box filter systems are proposed
  - Targeted dry-weather pollutants
    - Bacteria
    - Toxics



# Project Details

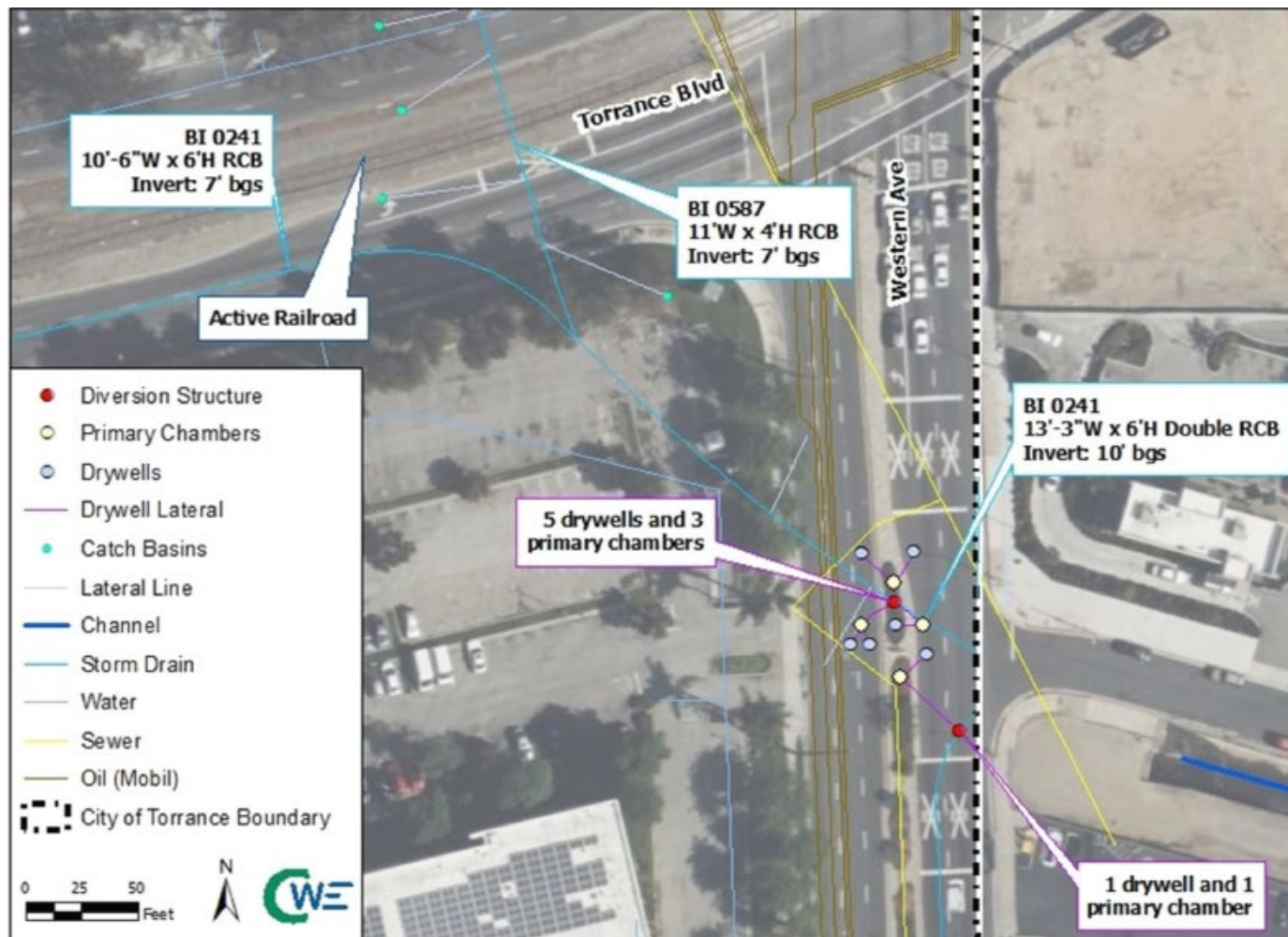


- Outfall SD-1054
  - Low Flow Diversion (LFD) connected to existing sewer system
  - Divert runoff to recycled/re-used
  - Interception at one watershed location
  - Dry-weather runoff and pollutants out of the drainage system, protecting downstream tributaries
  - Targeted dry-weather pollutants
    - Bacteria
    - Toxics





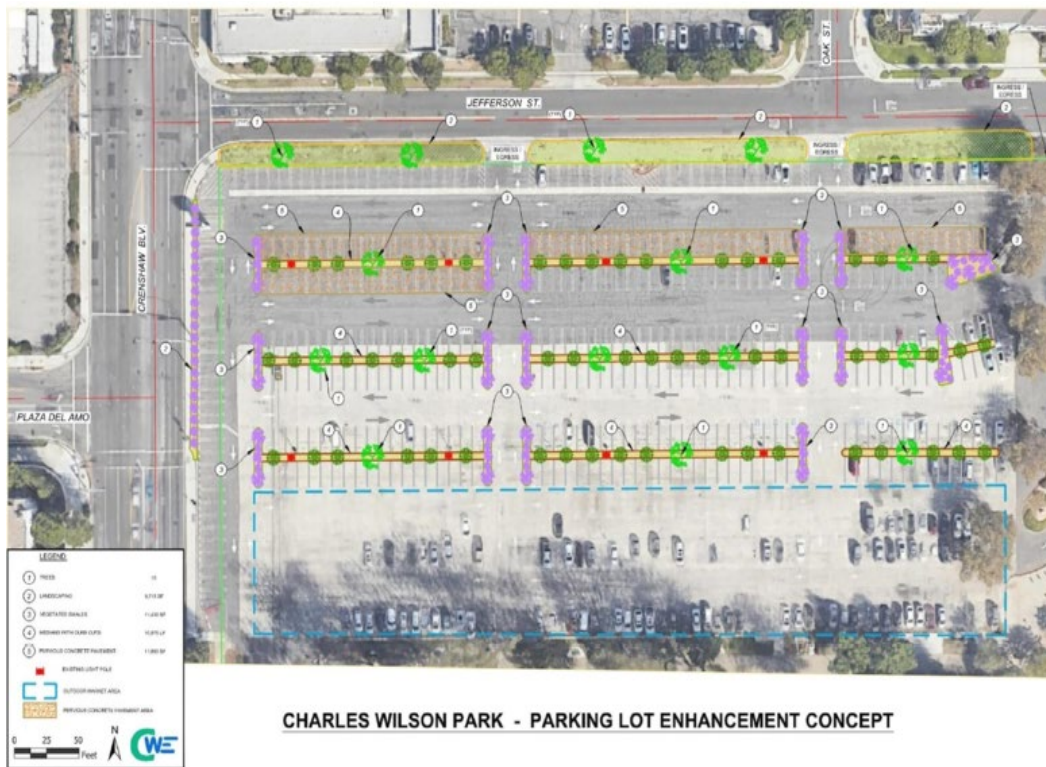
# Project Details



- Outfall BCEG-7 (Torrance Lateral)
  - Infiltration/Percolation: number of drywells based on percolation rates.
  - Drywells, preferred BMP for this watershed.
  - Drywells placed near downstream outfall, along LAFCD Facility BI 0241
    - Optimize capture area
    - Infiltrate dry-weather runoff



# Project Details



- Charles Wilson Park
  - Nature Based Solutions
  - Community Benefit improvements
- Removing and replacing impermeable with permeable concrete.
- Landscaping, vegetation, and trees
- Enhance the experience for community members.
- Enhancements improve water quality in the local watershed.





# Cost & Schedule

Phase	Description	Cost	Completion Date
Planning	Environmental Documentation/Permitting	\$192,591.00	04/2025
Design	Engineering Design	\$385,183.00	06/2025
Bid/Award	Construction Administration	\$577,774.00	07/2028
Construction	Construction	\$3,851,826.00	07/2028
<b>TOTAL</b>		<b>\$5,007,374.00</b>	

- Annual Maintenance Cost: \$103,090.00
- Annual Operation & Monitoring Cost: \$10,000.00 TOTAL
- Annualized Cost (module-generated):\$321,783.62
- Lifecycle Cost (module-generated): \$7,720,844.23
- Project Lifespan: 50 years





# Funding Request

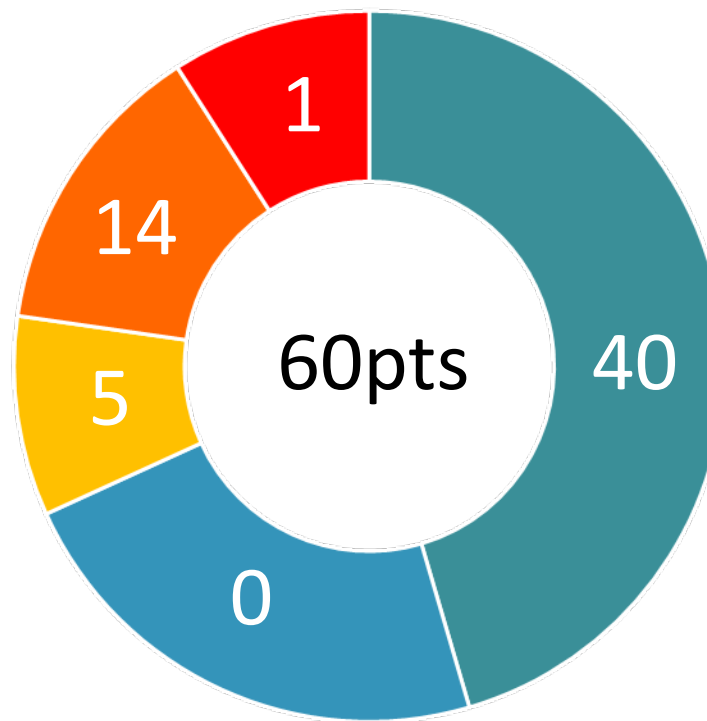
Year	SCW Funding Request	Phase	Efforts during Phase and Year
1	\$77,037	Planning	Environmental Documentation and Permitting
1	\$192,591	Design	Design
<b>Total Year 1</b>	<b>\$269,628</b>		
2	\$115,555	Planning	Environmental Documentation and Permitting
2	\$192,591	Design	Design
2	\$1,283,942	Construction	Construction
2	\$192,591	Bid/Award	Construction Administration
<b>Total Year 2</b>	<b>\$1,784,679</b>		
3	\$1,283,942	Construction	Construction
3	\$192,591	Bid/Award	Construction Administration
<b>Total Year 3</b>	<b>\$1,476,533</b>		
4	\$1,283,942	Construction	Construction
4	\$192,591	Bid/Award	Construction Administration
<b>Total Year 4</b>	<b>\$1,476,533</b>		
<b>TOTAL</b>	<b>\$5,007,374</b>		

- Future funding requests are not anticipated.



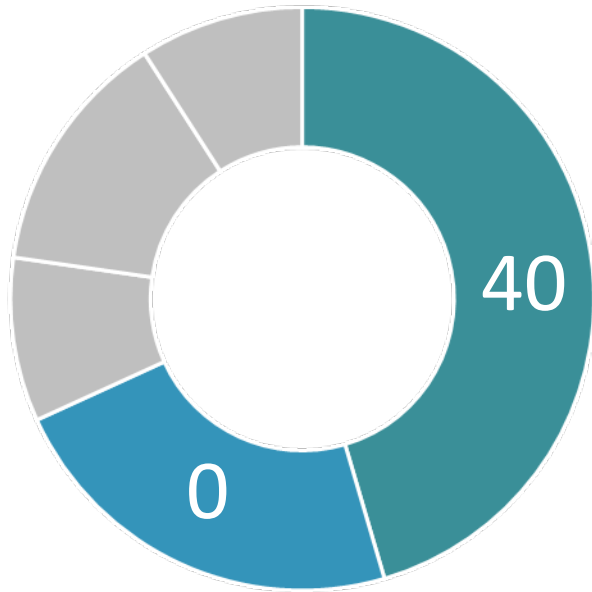
# Final Score (Confirmed by the Scoring Committee)

- Water Quality
- Water Supply
- Community Investment Benefits
- Nature Based Solutions
- Leveraged Funds and Community Support





# Water Quality & Water Supply Benefits

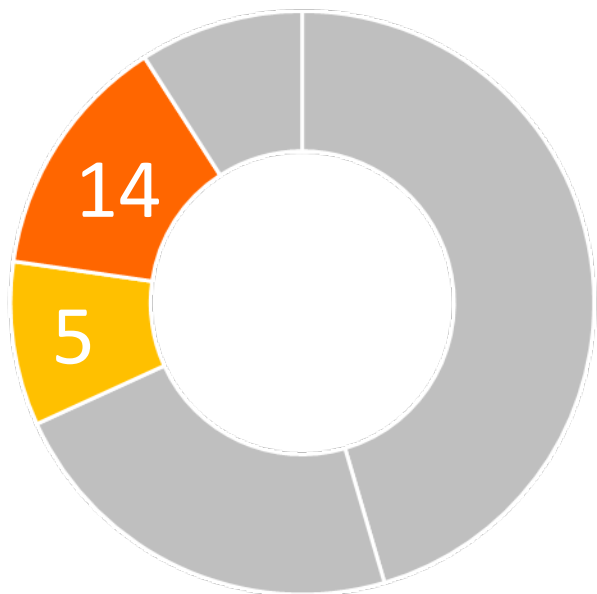


- Tree Box Filters – Treat and Release
- Low Flow Diversion (LFD) to treat, recycle/reuse dry-weather flows.
- Drywells to treat and infiltrate dry-weather flows
- Tributary Area: 3,220 ac (Oil Refinery Removed)
- Three priority outfalls: 4-2-1, SD-1054, and BCEG-7
- Capacity inflow: 1.31 cfs (total)
- Pollutant reduction is 100% for dry-weather toxics and bacteria.
- Annual water supply volume is 74 ac-ft (LFD only)





# Community Investment Benefits and Nature Based Solutions



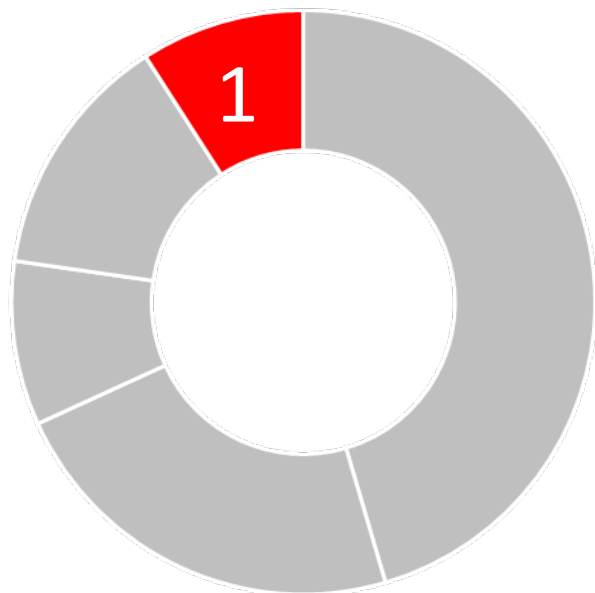
- Community Investment Benefits
  - Enhances/restores park space and habitat.
  - Creates/enhances new recreational activities.
  - Reduces heat local island effect and increase shade.
  - Increase number of trees, shade, and other vegetation at site.
- Nature Based Solutions
  - Mimics the natural processes.
  - Utilizes natural materials.
  - Decreases impermeable area (parking lot disturbed area) by over 80%.



# Leveraging Funds and Community Support

- Leveraging Funds

No leveraged funding included in the application



- Community Support

- Potential Stakeholders identified for future outreach
- Community outreach/engagement planned for future phases of the project.
- Local Support from Torrance Farmers Market, Bi-weekly use of Wilson Park Lot



# Questions?

**Larry Tortuya**

**Wilson Mendoza**