

GUIDANCE DOCUMENTS

- **Strengthening Community Engagement**
- **Disadvantaged Community Benefits**
 - **Water Supply**
 - **Nature-Based Solutions**
 - **Partial Funding**

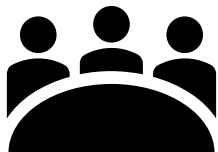


South Santa Monica Bay WASC
11/15/23





2022 Interim Guidance

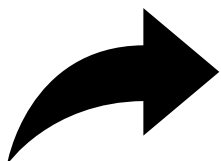


With stakeholder input, the District developed the 2022 Interim Guidance. Each component includes a brief vision for future guidance



2022 Interim Guidance

- Strengthening Community Engagement and Support
- Implementing Disadvantaged Community Policies
- Water Supply Guidance
- Programming of Nature-Based Solutions

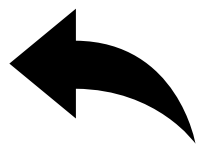


Other program aspects continue to be clarified or addressed through the Metrics and Monitoring Study and/or advancement of various regional studies

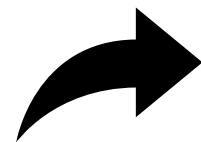


Strengthening Community Engagement and Support

This guidance includes:



1. Engagement Prior to Application



2. Engagement Plan for Project Implementation

	Good	Better	Best
Engagement Levels	<p>Inform - Provide the community with relevant information</p> <p>Consult - Gather input from the Community</p>	<p>Involve - Ensure community input, needs, and assets are integrated into processes, receive demonstrable consideration and appropriate responses, and inform planning</p> <p>Educate – Grow community understanding of the existing infrastructure systems, purposes, perceived outstanding needs, pertinent history and regulations, SCW Program opportunities (including Watershed Coordinators) to establish</p> <p>Learn – Grow own understanding of existing community, perceived needs, pertinent history, key concerns, and other potentially interested parties.</p>	<p>Collaborate - Leverage and grow community capacity to play a leadership role in both planning and implementation</p> <p>Incorporate - Foster democratic participation and equity by including the community in decision-making, bridge divide between community and governance</p> <p>Partner – Establish certain project concepts based on community-driven and identified needs, solidify formal partnerships, and build in sustained paths forward to joint implementation and management with well-defined roles per agreement</p>



Strengthening Community Engagement and Support



LEADERSHIP: COLLABORATION

LD1.3 Provide for Stakeholder Involvement

18

POINTS

INTENT

Early and sustained stakeholder engagement and involvement in project decision making.

METRIC

Establishment of sound and meaningful programs for stakeholder identification, early and sustained engagement, and involvement in project decision making.

LEVELS OF ACHIEVEMENT

IMPROVED A + B	ENHANCED A + B + C	SUPERIOR A + B + C + D	CONSERVING A + B + C + D + E	RESTORATIVE A + B + C + D + E + F
(3) Active Engagement	(6) Direct Engagement	(9) Community Involvement	(14) Community Satisfaction	(18) Stakeholder Partnerships
<p>(A) Primary and secondary stakeholders are identified through a stakeholder mapping process. Stakeholder concerns and specific objectives for stakeholder engagement are defined.</p> <p>(B) A proactive stakeholder engagement process is established with clear objectives. This occurs at the earliest stages of planning and is sustained through project construction. Engagement moves beyond education into active dialogue. Stakeholder views are monitored, and a two-way line of communication is established to reply to inquiries. Sufficient opportunities are provided for stakeholders to be involved in decision making. The participation process is transparent with opportunities to provide meaningful input.</p> <p>(C) A lead person from the project team, in addition to any public involvement lead or manager, works with stakeholder groups to understand communication needs and the desire for and scope of involvement.</p> <p>(D) There are specific cases in which public input influenced or validated project outcomes. Potentially conflicting stakeholder views were evaluated and addressed equitably during decision making.</p> <p>(E) Feedback is sought from stakeholders as to their satisfaction with the engagement process, and the resulting decisions were made based on their input.</p> <p>(F) One or more stakeholders, having mutual interests or interdependencies, are identified and engaged as partners.</p>				

This guidance includes several resources for designing and implementing engagement



Strengthening Community Engagement and Support

Tools and strategies to evaluate Community Engagement and Support that WASC and Scoring Committee members can use:

- **Read the justification provided in the application and submitted Feasibility Study about Community Engagement and Support for the Project.**
- **During presentations by Project proponents or SC evaluations, ask questions about the Community Engagement and Support for the Project.**
- **Ask Watershed Coordinator(s) to evaluate and report to the WASC how the people, city and county agencies, and other stakeholders would describe community needs, concerns, and objectives in the Watershed Area.**

Tips

- Remember: outreach TO communities is different from support **FROM** or partnerships **WITH** communities.
- When showing community support, provide evidence of **partnerships with NGOs**, or **compelling evidence** that project enjoys **widespread community support** (e.g., multiple letters of support from diverse constituencies within the community; public polling; documentation that the community helped inform the project).



Implementing Disadvantaged Community Policies

Location of Projects

3 “Buckets”

Projects Located Within a 2016 Disadvantaged Census Block Group (thus expressly benefit a DAC)



Projects NOT Located Within a 2016 Disadvantaged Census Block Group but NOT Claiming a DAC Benefit



Projects NOT Located Within a 2016 Disadvantaged Census Block Group but ARE Claiming a DAC Benefit



From ULAR Disadvantaged Community Programming [Presentation](#)

Disadvantaged community means a census block group that has an annual median household income of less than eighty percent (80%) of the Statewide annual median household income (as defined in Water Code section 79505.5).” (Section 16.03(H))

Disadvantaged Community (DAC) Benefit means a Water Quality Benefit, Water Supply Benefit, and/or Community Investment Benefit located in a DAC or providing benefits directly to a DAC population.” (Section 16.03(l))



Implementing Disadvantaged Community Policies

Whether a Project provides a “direct benefit” as used in SCWP policy is a **decision made by WASCs on a project-by-project basis.**

WASCs can:

- Program projects in a SIP and add or affirm disadvantaged community benefit claim
- Program projects in a SIP and remove disadvantaged community benefit claim
- Not include project in SIP

How Can you as a WASC Validate Direct Benefits?

Hearing from community members is the best way to validate a direct benefit.

Other Possible Considerations:

Adjacency:  Some projects are near disadvantaged block groups.

External Datasets:

-  Other Census data (DWI/DAC Mapping Tool)
-  CalEnviroScreen 4.0
-  LA County RPOSD Park Needs Assessment
-  IDW/DAC Involvement Program Greater LA County Needs Assessment



Water Supply Guidance

1. Establishes shared vocabulary
2. Clarifies characterization of Water Supply Benefits
3. Provides working guidance for some prominent uncertainty about water supply

Water Supply Benefits in the Safe, Clean Water Program

Los Angeles Flood Control District Code Section 16.03.00: **“Water Supply Benefit”** means an increase in the amount of locally available water supply, provided there is a nexus to Stormwater or Urban Runoff capture. Activities resulting in this benefit include, but are not limited to, the following:

- reuse and conservation practices,
- diversion of Stormwater or Urban Runoff to a sanitary sewer system for direct or indirect water recycling,
- increased groundwater replenishment or available yield, or
- offset of potable water use.



Nature-Based Solutions

Nature-Based Solution means a Project that utilizes natural processes that slow, detain, infiltrate or filter Stormwater or Urban Runoff. These methods may include:

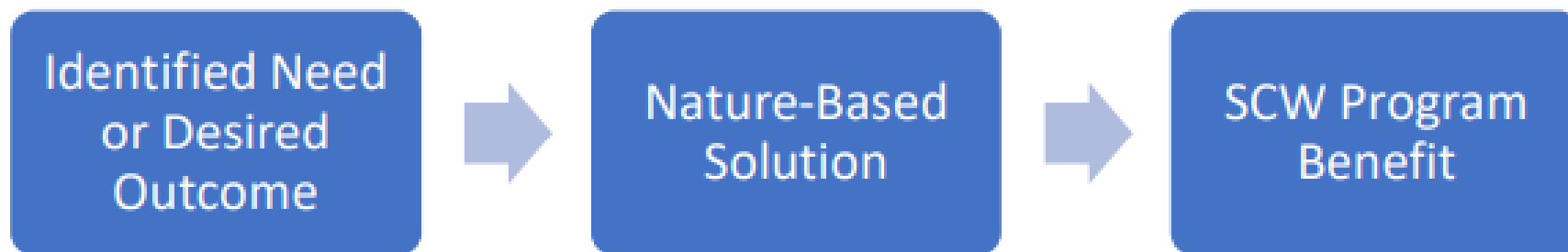
- relying predominantly on soils and vegetation;
- increasing the permeability of Impermeable Areas;
- protecting undeveloped mountains and floodplains;
- creating and restoring riparian habitat and wetlands;
- creating rain gardens, bioswales, and parkway basins;
- and enhancing soil through composting, mulching, and planting trees and vegetation, with preference for native species.





Nature-Based Solutions

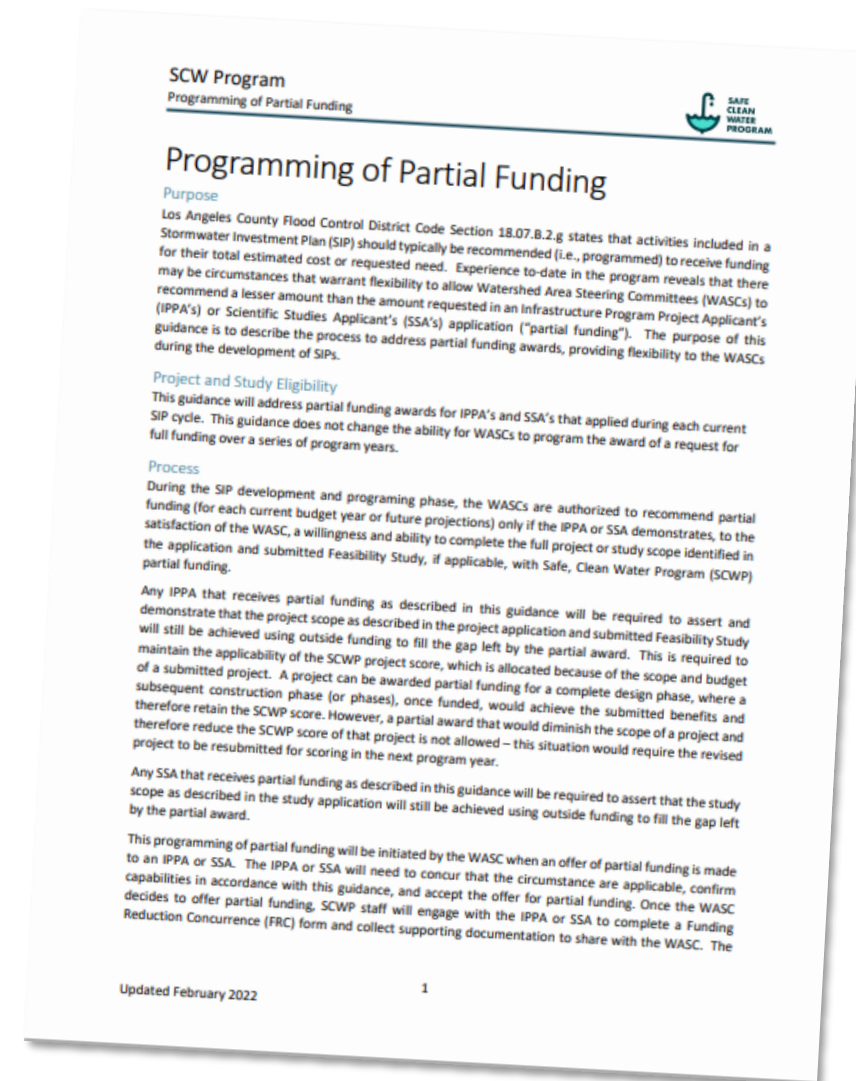
- Aims to help WASCs prioritize Nature-Based Solutions when evaluating Projects and programming SIPs
- Questions to ask regarding **individual projects**:
 - Are there natural processes or nature-mimicking strategies that this Project will use to address watershed needs and deliver SCW Program benefits?
 - If not, should this project be revisited for future SIP consideration instead?
- Questions to ask regarding **SIPs**:
 - Has the WASC prioritized Nature-Based Solutions within this and prior Stormwater Investment Plans? How are the Nature-Based Solutions funded to-date collectively providing the anticipated benefits to the Watershed Area, and where are the biggest needs or opportunities?





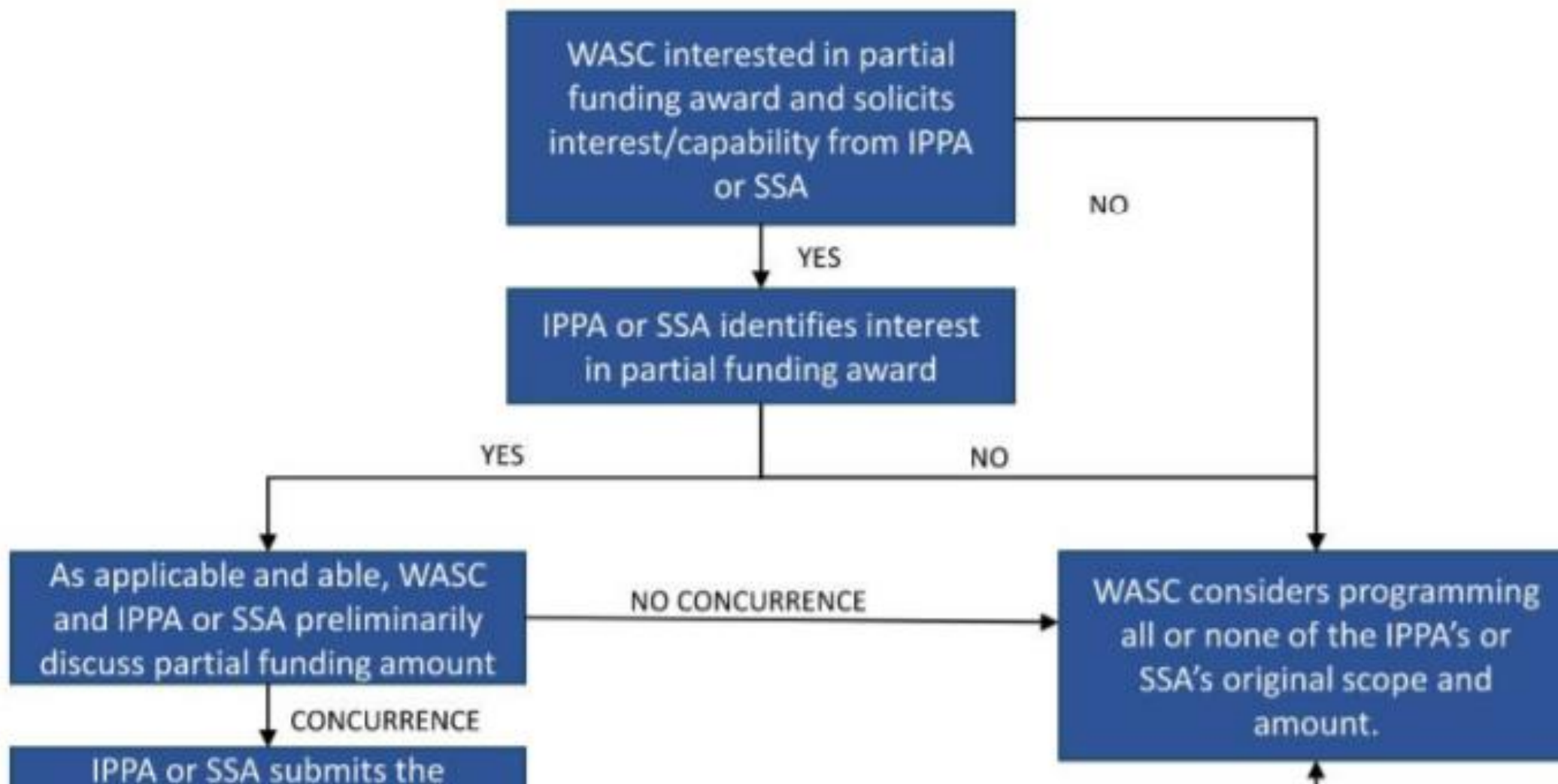
Refresher on Partial Funding Guidelines

- Goal to give WASCs additional flexibility when developing their SIPs
- A WASC can decide to offer funding that is less than what an Infrastructure Program or Scientific Study proponent requested.
- The Proponent must:
 - Agree to deliver the proposed scope with a reduced funding award, and
 - Describe to the satisfaction of the WASC that they will be successful filling the funding gap



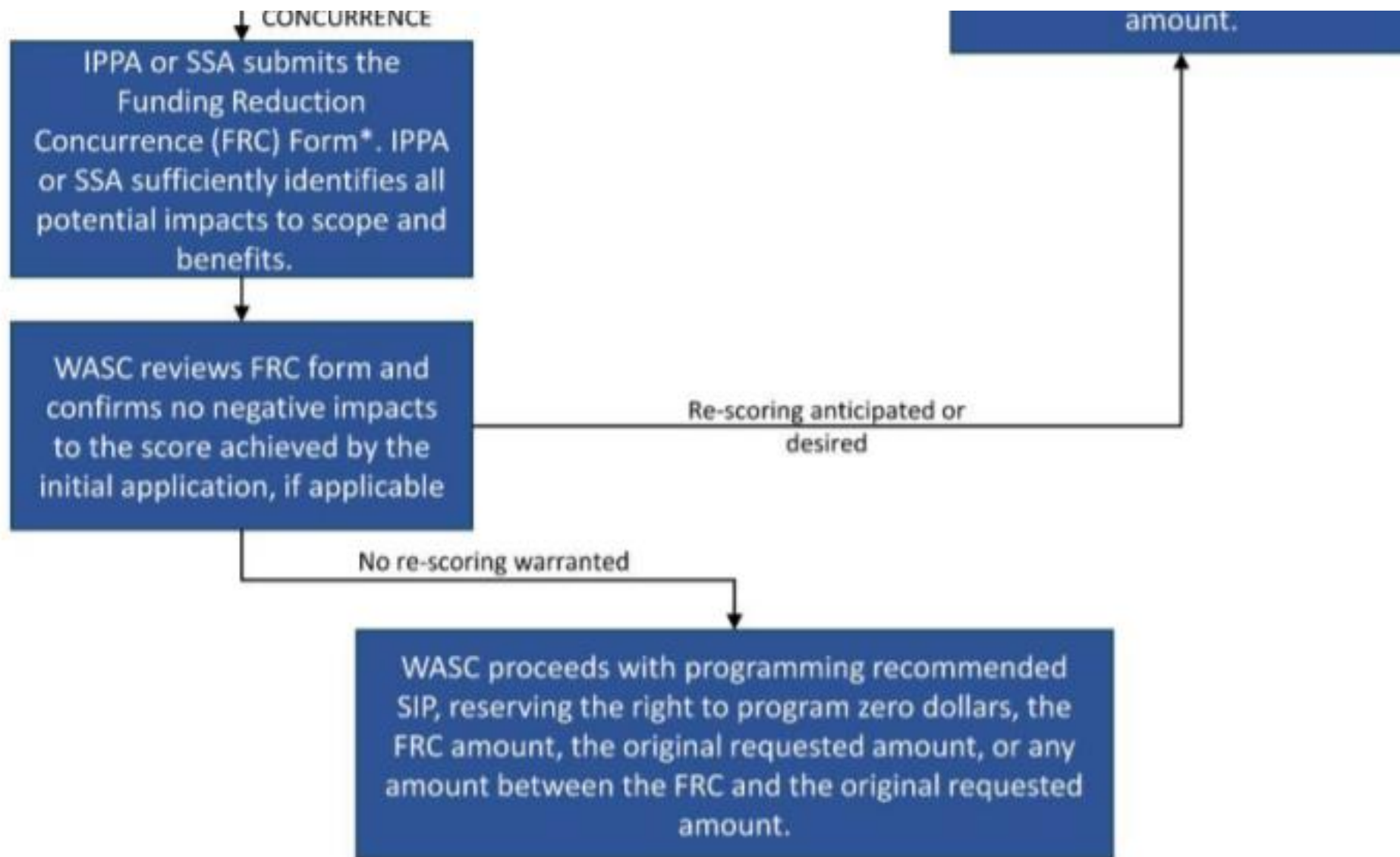


Refresher on Partial Funding Guidelines





Refresher on Partial Funding Guidelines



A person is shown in profile on the left side of the frame, looking towards a wall covered in numerous sticky notes and diagrams. The scene is dimly lit, with light coming from a window with blinds in the background. The sticky notes contain various handwritten notes and diagrams, suggesting a collaborative meeting or brainstorming session.

Discussion

Contact the program team at:

www.SafeCleanWaterLA.org

SafeCleanWaterLA@pw.lacounty.gov

1-833-ASK-SCWP (1-833-275-7297)