

Safe Clean Water Program South Santa Monica Bay WASC

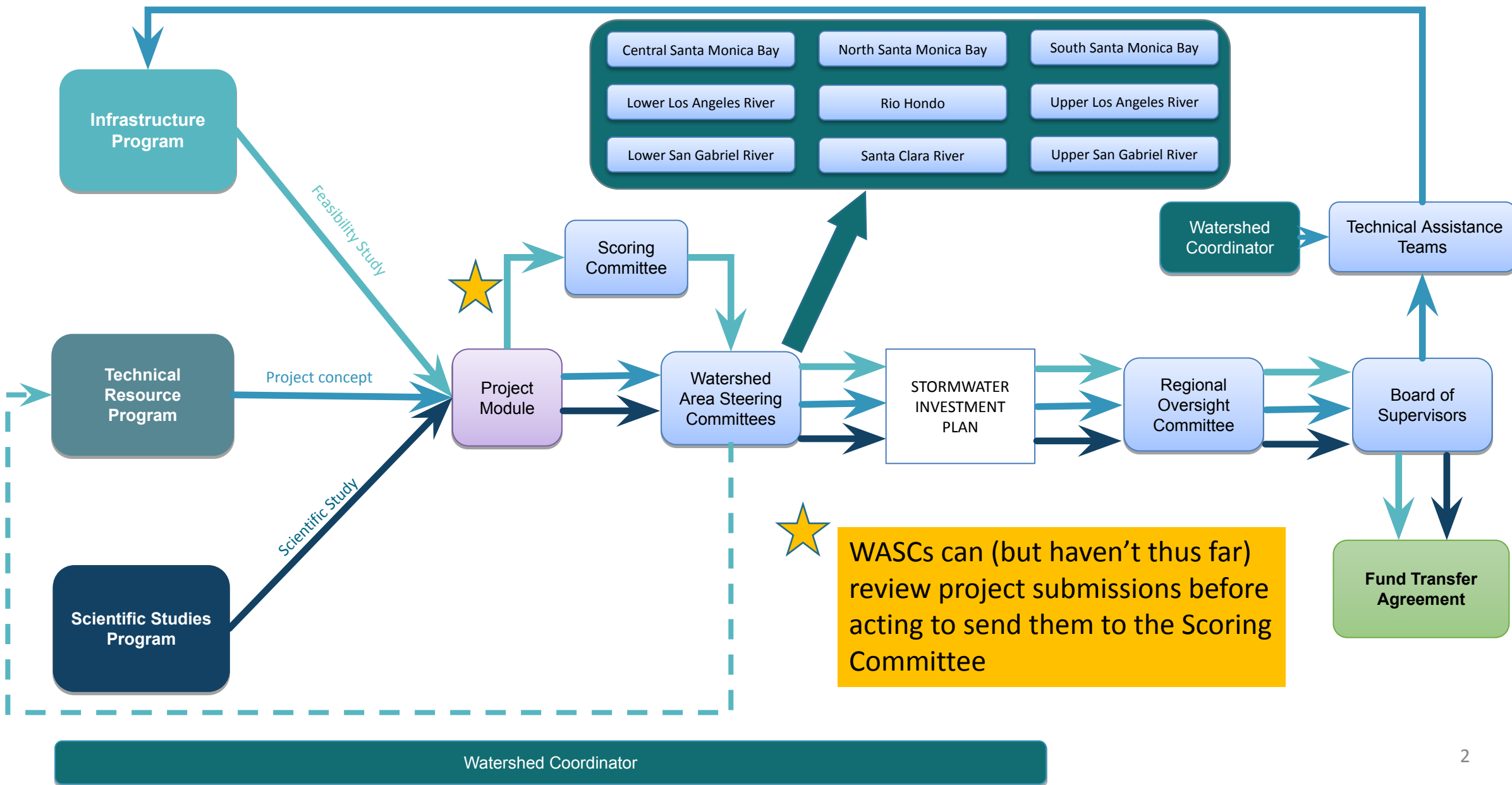
September 20, 2023

Providing FY24-25 project summaries to support WASC decision-making





Regional Program Process





Project Summary 1

Torrance Airport Stormwater Basin Project – module score 65

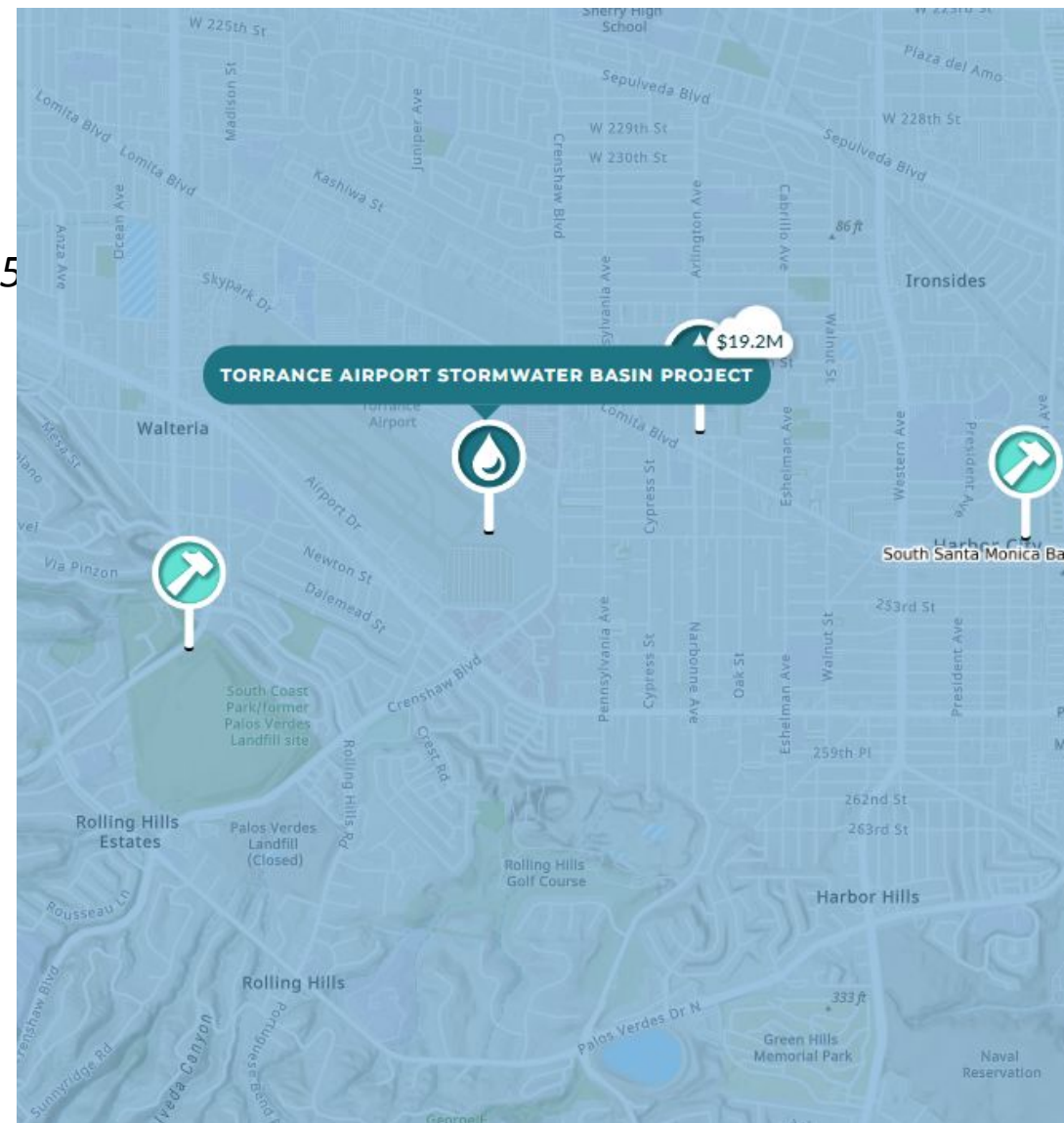
- *Lead: City of Torrance; Additional project collaborators: Cities of Rolling Hills Estates, Rancho Palos Verdes, Palos Verdes Estates, and County of Los Angeles*
- *Location: Torrance Airport, 3301 Airport Drive, Torrance, CA 90505*
- *Total request: \$19,190,402*
- *Timeline: Construction - 07/2025-06/2027; O&M through 2029*

Benefits include:

- Planting at least 180 new shade trees and native vegetation
- Capturing and infiltrating from 2,281 acres (storage volume of 8 acre feet per storm event of 85% storm)
- Removal of pollutants resulting in improved water quality at Wilmington Drain and Machado Lake

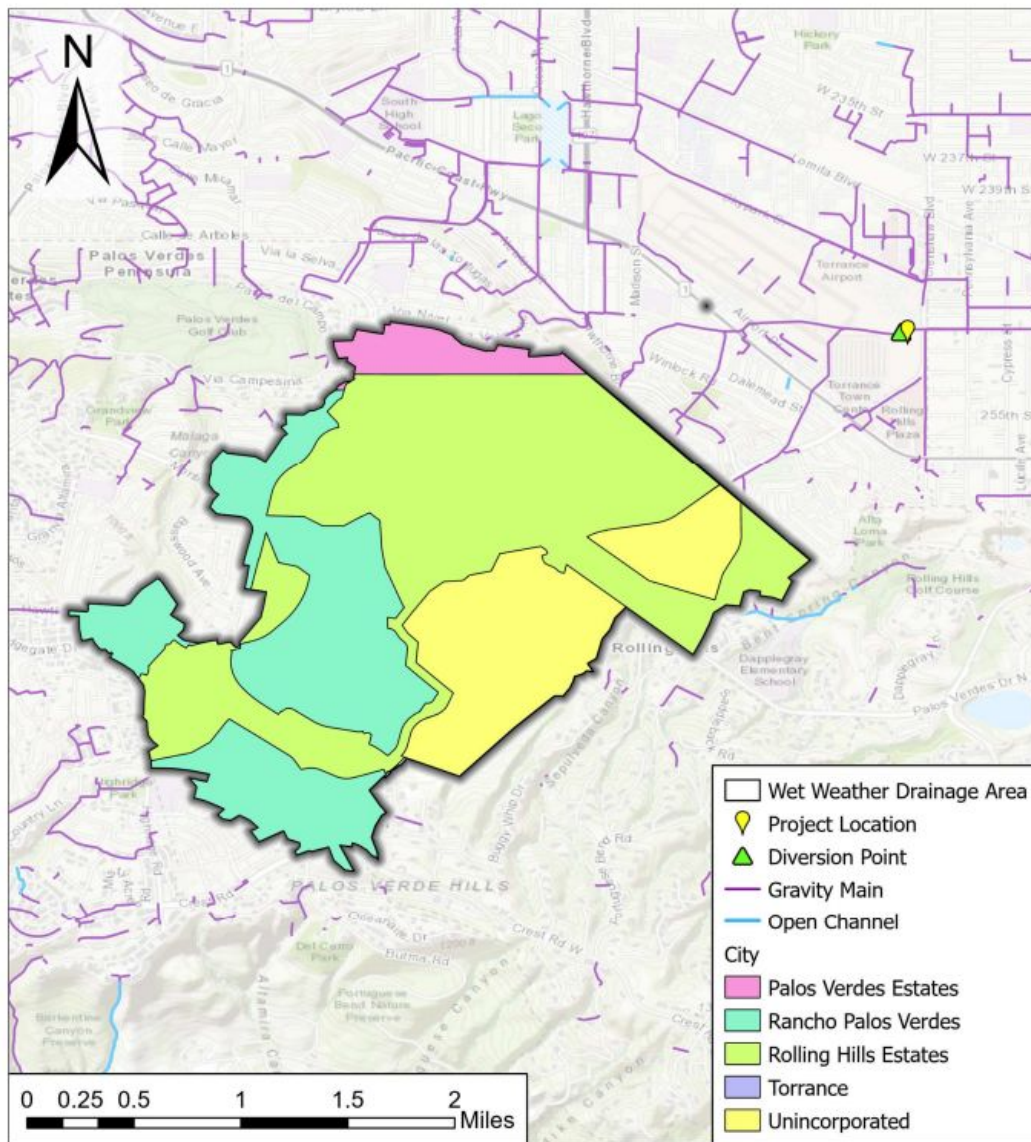
Claimed Disadvantaged Community Benefits: YES

- Described benefits to the community surrounding Ken Malloy Regional Harbor Park

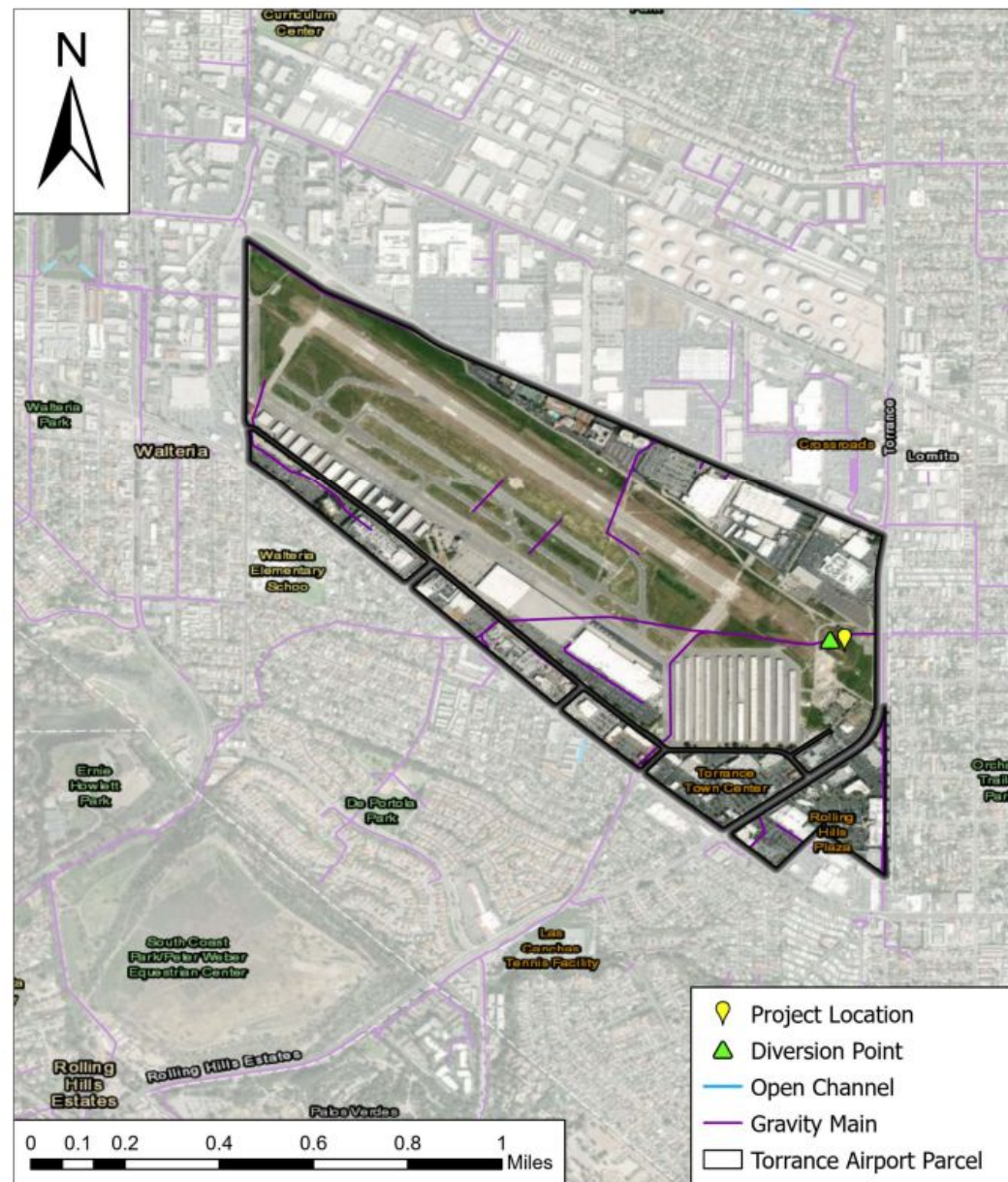




Project Summary 1



Drainage area jurisdiction boundaries for Torrance Airport Project





Project Summary 2

Stevenson Park Stormwater Capture Project – module score 73

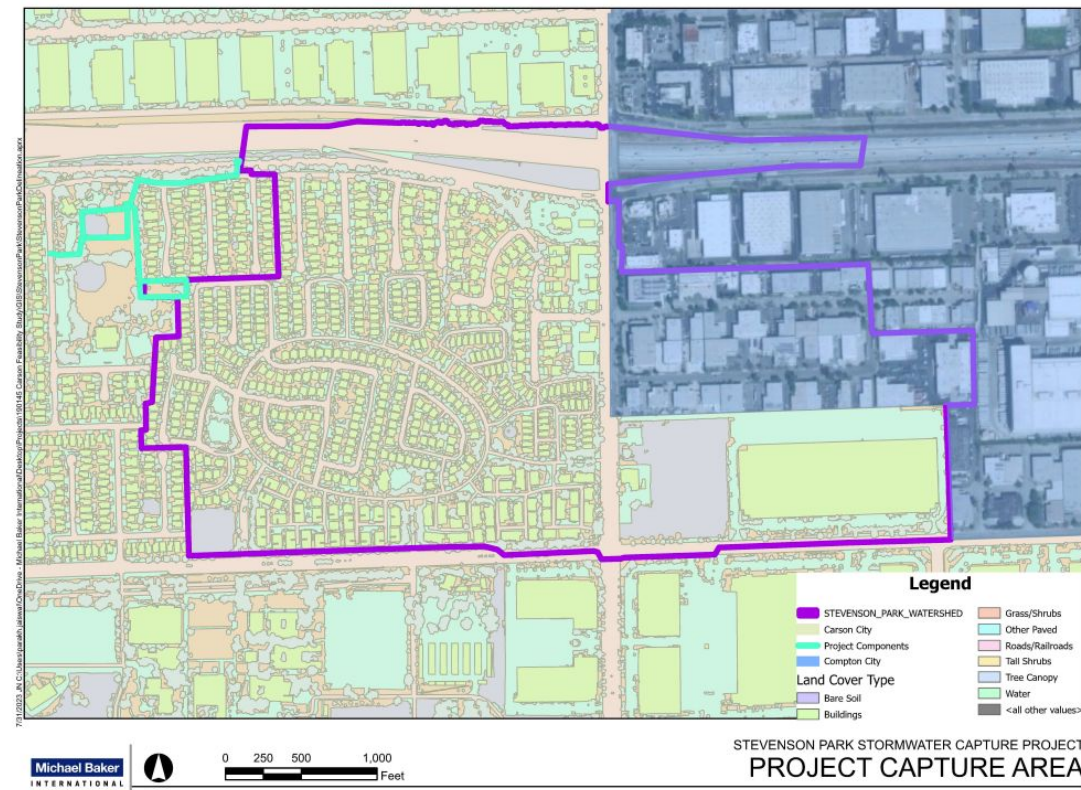
- *Lead: City of Carson Public Works*
- *Location: 17400 Lysander Dr, Carson CA 90746*
- *Total request: \$10,347,842*
- *Timeline: Planning - 07/2024; Design - 01/2025; Construction - 08/2027 through 12/2028*

Benefits include:

- Capturing 8 acre feet with 96 hr detention from 189 acreage area
- Anticipated 80% reduction in zinc and 100% reduction in trash (primary and secondary pollutants)
- Upgrades to the park, including improved recreation field turf and surface conditions, improved green space, and a decomposed granite walking trail

Claimed Disadvantaged Community Benefits: YES

- Project area is in 2017 Disadvantaged Community (Cal Enviro Screen 3.0 only) census tracts - [4.0 ranked in 67%]





Project Summary 2





Project Summary 3

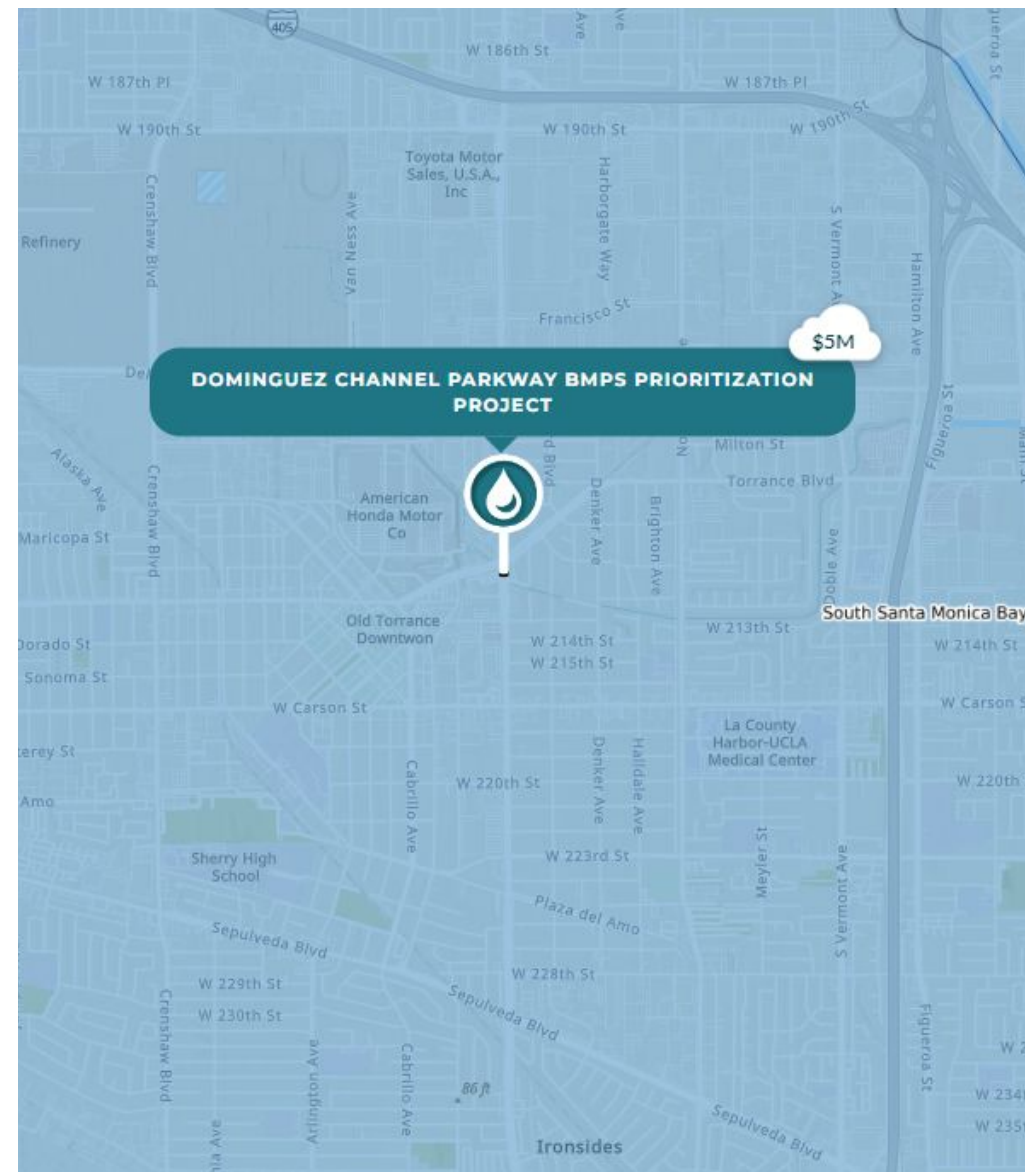
Dominguez Channel Parkway BMPs Prioritization Project– module score of 78

- *Lead: City of Torrance, Additional project collaborators: LA County Department of Public Works, CWE*
- *Location: Torrance Boulevard and S. Western Avenue, Torrance, CA 90503*
- *Total request: \$5,007,374*
- *Timeline: Planning - 04/2025; Design - 06/2025; Construction - 07/2028*

Benefits include:

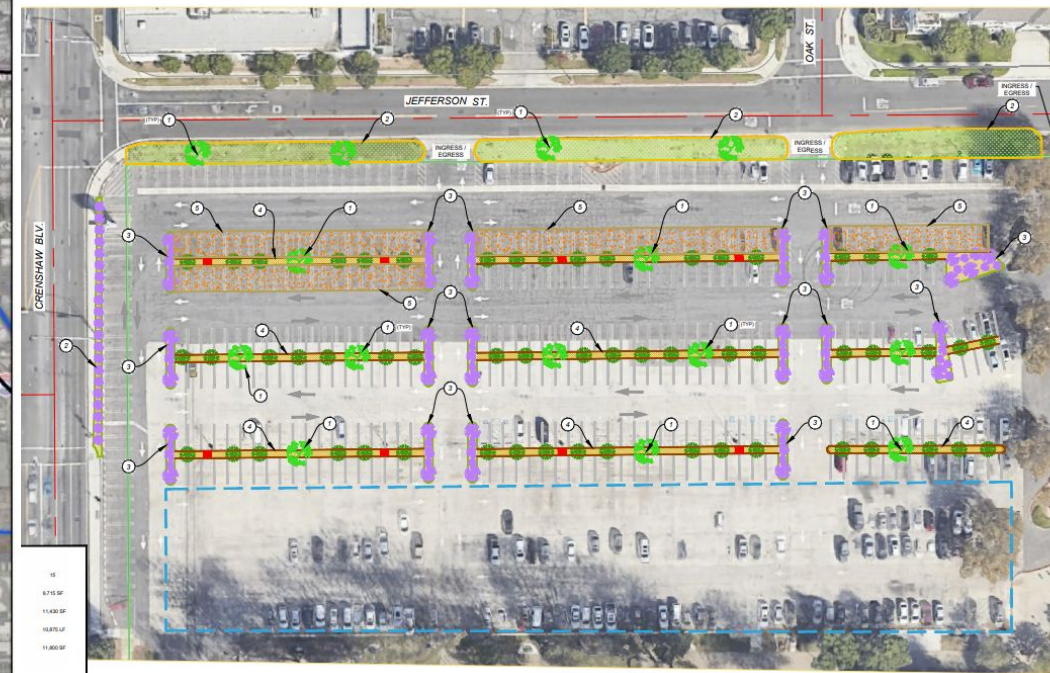
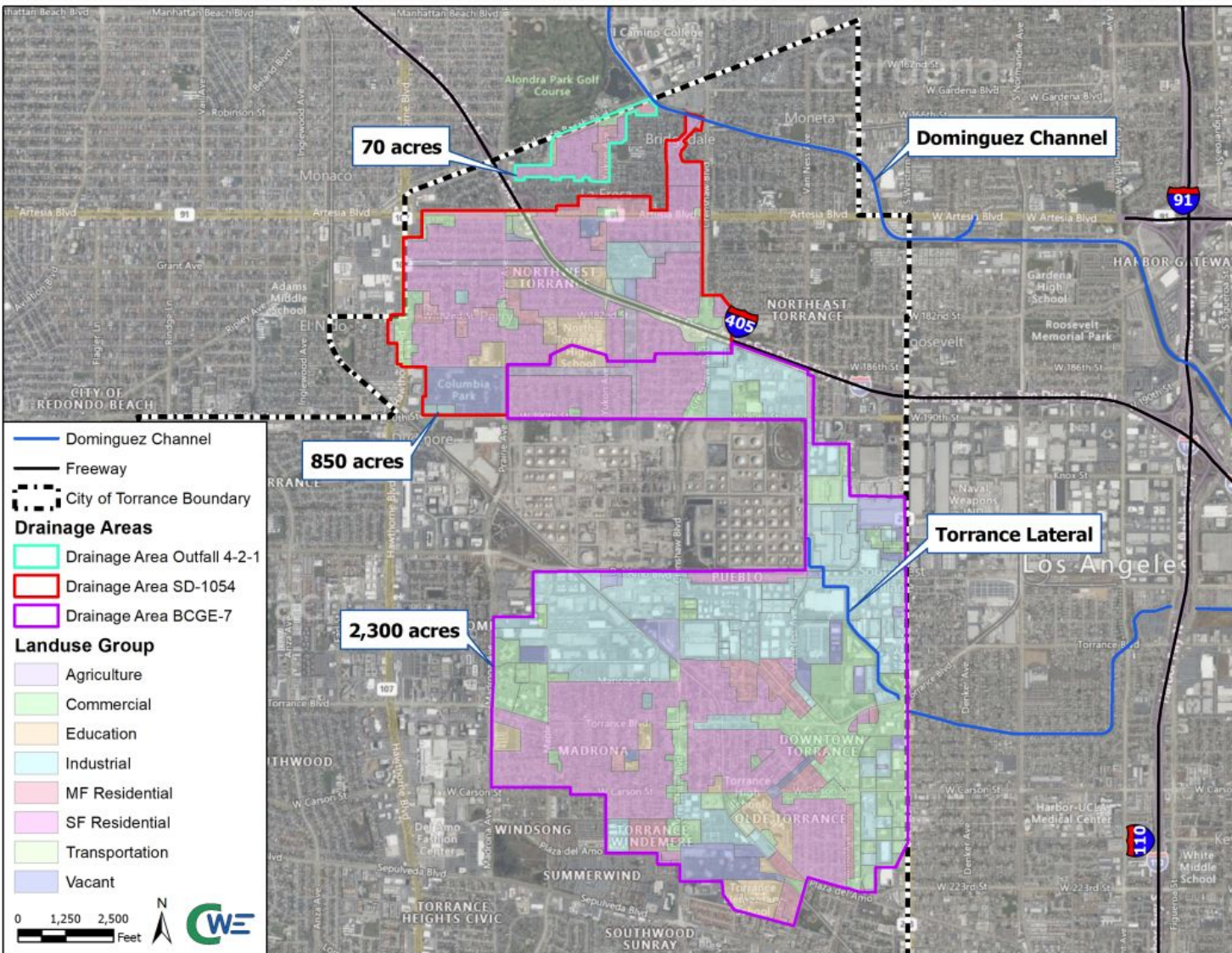
- Three sub drainage areas designed to capture, infiltrate, treat and release, or divert 100% of **dry weather** flow (target bacteria)
- Tree box filters with vegetation on Redondo Beach Blvd and Yukon Ave, drywells on Western, one low flow device on Cherry, and a new parking lot with drywells at Charles H. Wilson Park (permeable pavement, 15 new trees, nearly 10,000 sq ft new landscaping, 11,000+ new vegetated swales)

Claimed Disadvantaged Community Benefits: NO





Project Summary 3



CHARLES WILSON PARK - PARKING LOT ENHANCEMENT CONCEPT

Thank You!



Heal the Bay



SAFE
CLEAN
WATER
PROGRAM