



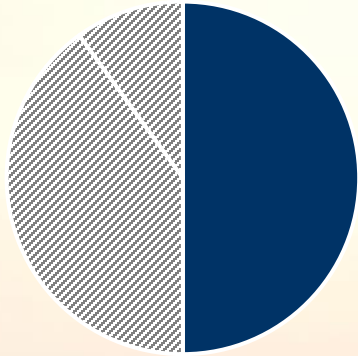
**SAFE CLEAN WATER PROGRAM**

**Welcome Back!**

**Year 5 (FY24-25)**



# Regional Program



**50% Program revenue**

Provides funding for multi-benefit watershed-based projects

WATERSHED AREA	2022-23 Regional Tax Return Estimates
Central Santa Monica Bay	\$ 17.2 Million
Lower Los Angeles River	\$ 12.4 Million
Lower San Gabriel River	\$ 16.7 Million
North Santa Monica Bay	\$ 1.8 Million
Rio Hondo	\$ 11.6 Million
Santa Clara River	\$ 5.8 Million
South Santa Monica Bay	\$ 17.5 Million
Upper Los Angeles River	\$ 38.6 Million
Upper San Gabriel River	\$ 18.7 Million





# Stormwater Investments in SCWP

Board of Supervisors will consider FY23–24 SIPs on August 8, 2023

The Board of Supervisors will soon vote on whether to approve **\$162 million** for **25** infrastructure projects, **5** feasibility studies, and **2** scientific studies, along with previously earmarked allocations for the next five years. These new and ongoing projects will:

Capture stormwater across

- 293,000 acres
- in 52 cities and unincorporated communities

Capture enough supply for more than 500,000 people for one year

Reduce pollution and support regulatory compliance

Invest over \$719M in disadvantaged communities

Fund 12 Watershed Coordinators who provide technical resources, education, and engagement





# Funded Projects

The SSMB WASC has funded **26** Regional projects, including:

- **15** Infrastructure Program Projects
- **7** Technical Resources Projects + **1** Watershed Coordinator
- **3** Scientific Studies

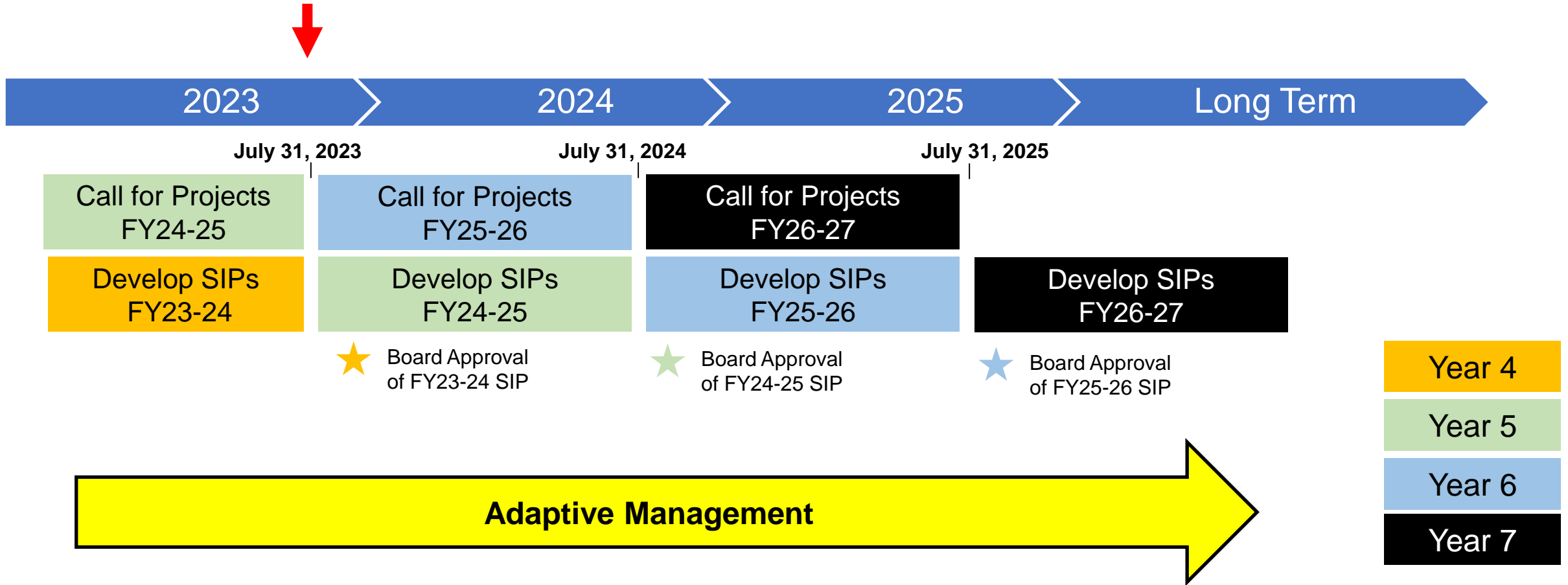
Pending BOS approval



Program	Fiscal Year	Project Developer/Municipality	Project Name	Funding Amount
Infrastructure Project	FY20-21	City of Torrance	Torrance Airport Storm Water Basin Project, Phase 2	\$906k
Infrastructure Project	FY20-21	City of Los Angeles, Bureau of Sanitation	Wilmington Q Street Local Urban Area Flow Management Project	\$4.9M
Infrastructure Project	FY20-21	Los Angeles County	Alondra Park Multi Benefit Stormwater Capture Project	\$30M
Scientific Study	FY20-21	City of Los Angeles Sanitation	Recalculation of Wet Weather Zinc Criterion	\$411k
Technical Resource	FY20-21	Los Angeles County	Harbor City Park Multi-Benefit Stormwater Capture Project	\$300k
Technical Resource	FY20-21	City of Rancho Palos Verdes	Eastview Park	\$300k
Technical Resource	FY20-21	Los Angeles County Flood Control District	South Santa Monica Bay Watershed Coordinator	\$400k
Infrastructure Project	FY21-22	City of Torrance	Stormwater Basin Expansion Project	\$4.5M
Infrastructure Project	FY21-22	City of Los Angeles, Bureau of Sanitation and Environment	Wilmington Neighborhood Greening Project	\$12.2M
Infrastructure Project	FY21-22	City of Manhattan Beach	South Santa Monica Bay Water Quality Enhancement: 28th Street Storm Drain Infiltration Project	\$17.6M
Infrastructure Project	FY21-22	City of Carson	Carson Stormwater and Runoff Capture Project at Carriage Crest Park	\$1M
Technical Resource	FY21-22	City of Rolling Hills Estates	Palos Verdes Peninsula Multi-Benefit Flow Diversion Project	\$300k
Technical Resource	FY21-22	City of Torrance	Prioritization of Parkway BMPs for Dominguez Channel/ Harbors Toxics TMDL	\$300k
Scientific Study	FY21-22	Gateway Water Management Authority	Regional Pathogen Reduction Study	\$8.5M
Infrastructure Project	FY22-23	Hermosa Beach	Hermosa Beach Multi-Benefit Parking Lot Greening Project (Lot D)	\$424k
Infrastructure Project	FY22-23	City of Redondo Beach	Fulton Playfield Multi-Benefit Infiltration Project	\$4.3M
Infrastructure Project	FY22-23	City of Lomita	Downtown Lomita Multi-Benefit Stormwater Project	\$449k
Infrastructure Project	FY22-23	Los Angeles County Public Works	West Rancho Dominguez - San Pedro Street Green Improvement	\$800k
Scientific Study	FY22-23	University of California Riverside	Microplastics in LA County Stormwater	\$991k
Technical Resource	FY22-23	City of Lawndale	City of Lawndale Southern Revitalization Project	\$300k
Technical Resource	FY22-23	City of Inglewood	Darby Park Multi-Benefit Project	\$300k
Infrastructure Project	FY23-24	City of Torrance	Beach Cities Green Streets Project	\$5.4M
Infrastructure Project	FY23-24	City of Redondo Beach	Glen Anderson Park Regional Stormwater Capture Green Streets	\$782k
Infrastructure Project	FY23-24	City of Los Angeles, Department of Public Works, LA Sanitation and Environment	Machado Lake Ecosystem Rehabilitation (MLER) Operations and Maintenance	\$3.2M
Infrastructure Project	FY23-24	City of Los Angeles, Department of Public Works, LA Sanitation and Environment	Wilmington-Anaheim Green Infrastructure Corridor Project	\$10.3M
Technical Resource	FY23-24	City of Hawthorne	Holly Park Multi-Benefit Drought Resiliency and Stormwater Infiltration Project	\$300k



# Regional Program Timeline





# Year 5 Submitted Projects

Call for Projects closed on July 31st

Program	Preliminary Total SCW Funding Requested	Preliminary Projects Submitted
Infrastructure Program (>85%)	~\$234M	33*
Technical Resources Program (≤10%)	\$1.2M	4
Scientific Studies Program (≤5%)	~\$ 8M	4
<b>TOTAL</b>	<b>~\$ 243M</b>	<b>41</b>

Watershed Area	Approximate Number of IP Projects
Central Santa Monica Bay	3
Lower Los Angeles River	2
Lower San Gabriel River	5
North Santa Monica Bay	1
Rio Hondo	4
Santa Clara River	1
South Santa Monica Bay	4
Upper Los Angeles River	13
Upper San Gabriel River	0
<b>Grand Total</b>	<b>33</b>

\*values subject to change pending completeness check by the District





# Roles & Responsibilities

## WASC members have the responsibilities identified in the WASC Operating Guidelines

- A. Select a Chair, Co-Chairs, and/or Vice-Chair as deemed prudent;
- B. Work with District staff to schedule and commit to meetings in advance;
- C. Regularly attend WASC meetings and conduct other WASC business. An absence of two consecutive meetings or more than three meetings in one year will be considered failure to attend meetings making the member eligible for removal as a member of the WASC;
- D. Communicate regularly with District staff via phone, electronic messaging, email, and other means of communication;
- E. Meet, confer, coordinate, collaborate, and cooperate with one another, in good faith, to carry out the responsibilities of the WASC;
- F. Share expertise and provide guidance, and information on those matters for which it has specific expertise;
- G. Participate in the development of Stormwater Investment Plans (SIP) so that the development of the SIPs benefits from various stakeholder perspectives;
- H. Consider findings and recommendations from the Regional Oversight Committee before submitting final recommended SIP;
- I. Collectively confirm Scoring Committee Members from the Board approved member lists of eligible candidates;
- J. Use discretion and good business judgment in discussing the affairs of the WASC with Non-WASC-related parties – any media related inquires shall be directed to the District;
- K. If intending to claim a stipend for attended meetings, submit certification that he/she is not otherwise being compensated per ARTICLE VI, Section 8 of Operating Guidelines.



# WASC Roles & Responsibilities

## Hold Regular Public Meetings

- No less than quarterly
- An absence of two consecutive meetings or more than three meetings in one year will make the member eligible for removal from the WASC
- WASC meetings are subject to the Brown Act and AB 2449

Each committee member should assign an **Alternate** to attend on behalf of the **Primary** in case of an absence.

Member Type	Position
Agency	Flood Control District
Agency	Water Agency
Agency	Groundwater / Water Agency 2
Agency	Sanitation
Agency	Open Space
Community Stakeholder	At Large
Community Stakeholder	At Large
Community Stakeholder	Environmental
Community Stakeholder	Business
Community Stakeholder	Environmental Justice
Municipal Members	
Municipal Members	
Municipal Members	
Municipal Members	
Municipal Members	
Municipal Members	
Municipal Members	
Municipal Members	
Municipal Members	
Watershed Coordinator(s)	8

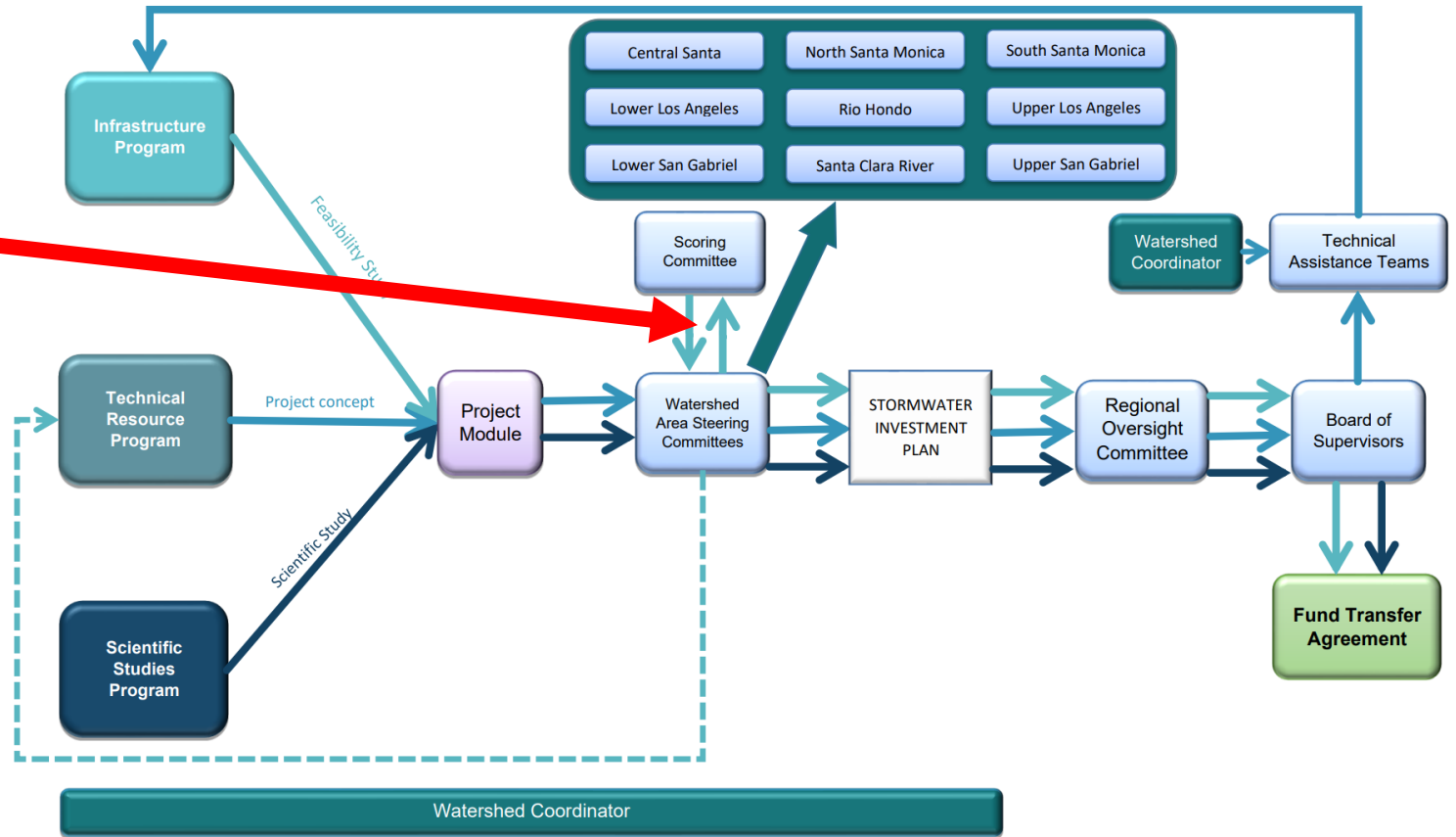




# WASC Roles & Responsibilities

After completeness checks, WASCs can vote to send none, some, or all complete feasibility studies to the Scoring Committee for consideration.

Regional Program Structure and Flow Chart





# WASC Roles & Responsibilities

## Completeness check:

Only IP projects meeting the following criteria shall be submitted to the SC for evaluation:

- Projects for which a Feasibility Study (or equivalent) has been completed.
- Projects are multi-benefit
- Projects designed for a minimum useful life of 30 years
- Projects that are included in a **regional water management plan**

1. Enhanced Watershed Management Plan (E/WMP) inclusion

2. Greater Los Angeles County (GLAC) Integrated Regional Water Management (IRWM) or Upper Santa Clara River IRWM Plan inclusion

More information: [Pathway to Inclusion Document](#)



# WASC Roles & Responsibilities

## NEW: Alternate Water Supply Scoring Pilot (Optional)

- Scoring tallies at one-point increments.
- This is for FY24–25 Call for Project cycle ONLY
- Scoring Committee will take the alternate scoring into consideration

B. Significant Water Supply Benefits	25 points max	The Project provides water re-use and/or water supply enhancement benefits
	13 points max	<p>B1. Water Supply Cost Effectiveness. The Total Life-Cycle Cost<sup>2</sup> per unit of acre foot of Stormwater and/or Urban Runoff volume captured for water supply is:</p> <ul style="list-style-type: none"> <li>• &gt; \$104,000/ac-ft = 1 point</li> <li>• \$39,700-104,000/ac-ft = 2 points</li> <li>• \$29,400-39,700/ac-ft = 3 points</li> <li>• \$19,400-29,400/ac-ft = 4 points</li> <li>• \$13,600-19,400/ac-ft = 5 points</li> <li>• \$8,880-13,600/ac-ft = 6 points</li> <li>• \$7,020- 8,880/ac-ft = 7 points</li> <li>• \$5,360-7,020/ac-ft = 8 points</li> <li>• \$2,930-5,360/ac-ft = 9 points</li> <li>• \$2,290-2,930/ac-ft = 10 points</li> <li>• \$1,786-2,290/ac-ft = 11 points</li> <li>• \$976-1,786/ac-ft = 12 points</li> <li>• &lt;\$976/ac-ft = 13 points</li> </ul>
Section	Score Range	Scoring Standards
B. Significant Water Supply Benefits, continued	12 points max	<p>B2. Water Supply Benefit Magnitude. The yearly additional water supply volume resulting from the Project is:</p> <ul style="list-style-type: none"> <li>• &gt;0-2 ac-ft/year = 1 point</li> <li>• 2-6 ac-ft/year = 2 points</li> <li>• 6-11 ac-ft/year = 3 points</li> <li>• 11-34 ac-ft/year = 4 points</li> <li>• 34-61 ac-ft/year = 5 points</li> <li>• 61-100 ac-ft/year = 6 points</li> <li>• 100-137 ac-ft/year = 7 points</li> <li>• 137-189 ac-ft/year = 8 points</li> <li>• 189-263 ac-ft/year = 9 points</li> <li>• 263-420 ac-ft/year = 10 points</li> <li>• 420-692 ac-ft/year = 11 points</li> <li>• &gt;692 ac-ft/year = 12 points</li> </ul>





# Programming the SIP

## Programming the SIP

- **Projects evaluated over a rolling 5-yr period**
- **WASCs must balance:**
  - 85%/10%/5% ratios
  - Spectrum of project types and sizes
  - Proportional municipality benefits
  - Disadvantaged community benefits
  - Prioritizing nature-based solutions
  - Reserving budget

Infrastructure Program

≥ 85%

Technical Resource  
Program

≤ 10%

Scientific Studies Program

≤ 5%



# Programming the SIP

- Prioritizing nature-based solutions
- Implementing disadvantaged community policies
  - Whether a Project provides a “direct benefit” as used in SCWP policy is a **decision made by WASCs on a project-by-project basis.**
- Strengthening community engagement
  - Engagement prior to application
  - Engagement plan for project implementations

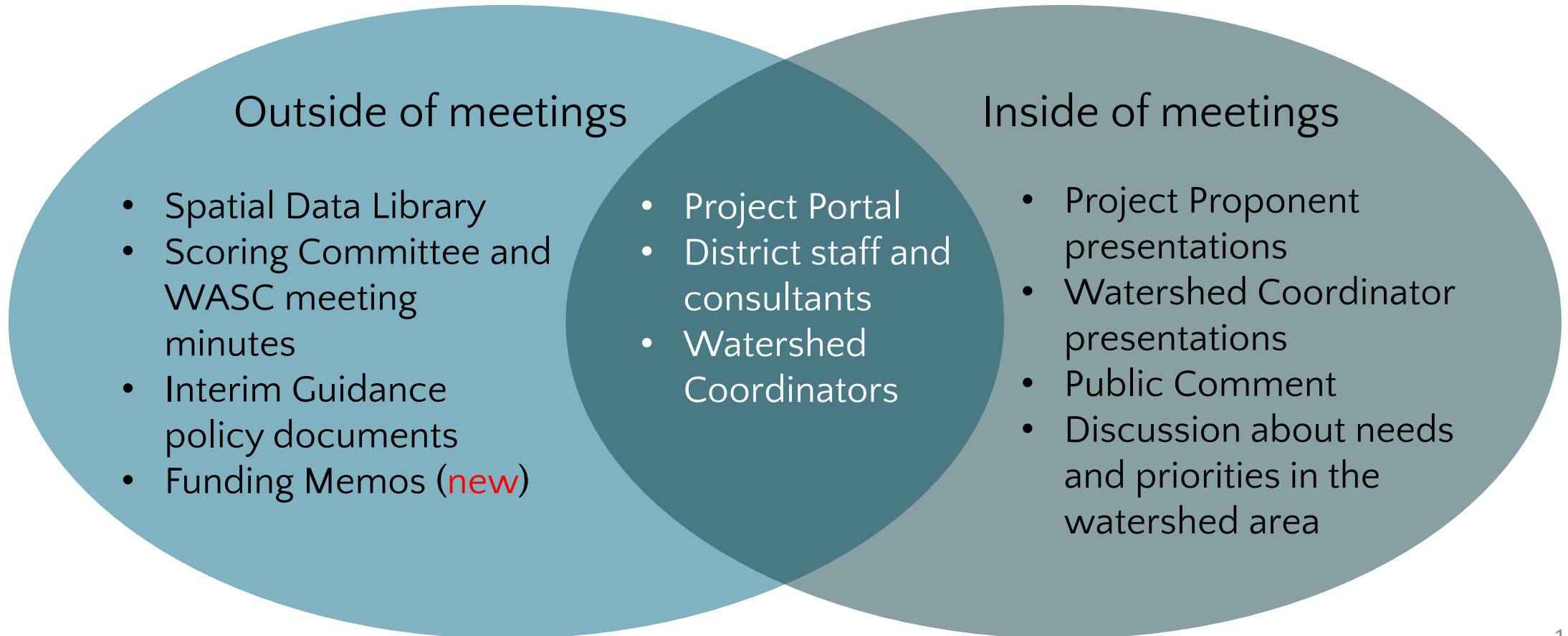
	Good	Better	Best
Engagement Levels	<p><b>Inform</b> - Provide the community with relevant information</p> <p><b>Consult</b> - Gather input from the Community</p>	<p><b>Involve</b> - Ensure community input, needs, and assets are integrated into processes, receive demonstrable consideration and appropriate responses, and inform planning</p> <p><b>Educate</b> – Grow community understanding of the existing infrastructure systems, purposes, perceived outstanding needs, pertinent history and regulations, SCW Program opportunities (including Watershed Coordinators) to establish</p> <p><b>Learn</b> – Grow own understanding of existing community, perceived needs, pertinent history, key concerns, and other potentially interested parties.</p>	<p><b>Collaborate</b> - Leverage and grow community capacity to play a leadership role in both planning and implementation</p> <p><b>Incorporate</b> - Foster democratic participation and equity by including the community in decision-making, bridge divide between community and governance</p> <p><b>Partner</b> – Establish certain project concepts based on community-driven and identified needs, solidify formal partnerships, and build in sustained paths forward to joint implementation and management with well-defined roles per agreement</p>

Good, Better, Best spectrum of community engagement, from [2022 Interim Guidance](#)



# Programming the SIP

The Program has many ways to support your “homework” outside of meetings, and your deliberation during meetings:







# Funding Memos (new)

- Generated for each SCWP IP project application submitted, every fiscal year
- Will reduce current constraints in **identifying leverage funding sources** and **aid the WASC in funding priorities**, such as partial funding

## Project Summary & Benefits

- As stated in the submitted SCW IP project application

## Overview of Funding Need for Project

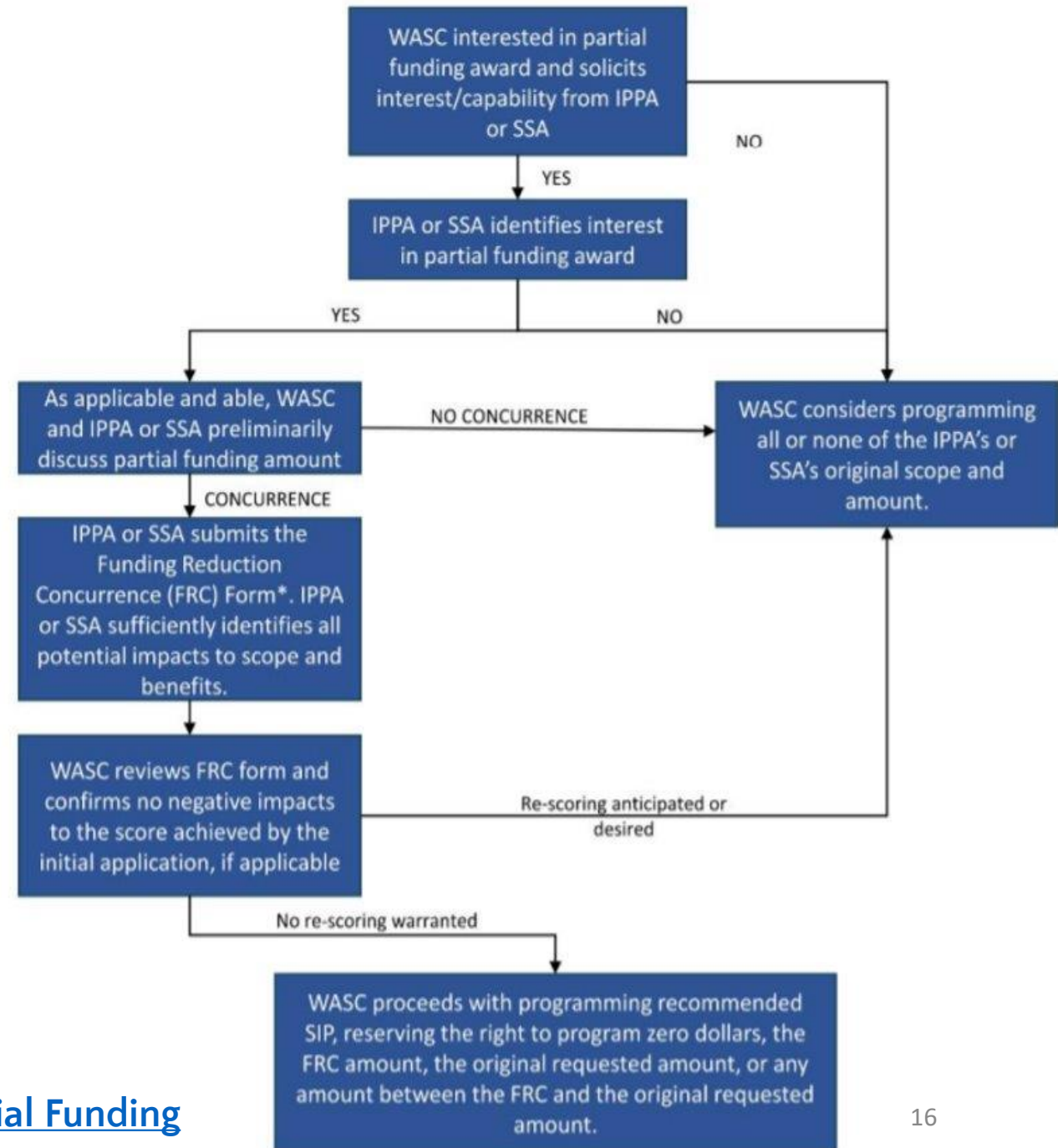
- FY Breakdown of funding request
- Assessment of funding competitiveness for leverage funding sources

## Funding Opportunities

- Identify potential funding themes
- Identify potential leverage funding opportunities
  - Includes grant program overview, guidelines, timeline, etc.

# Partial Funding Guidelines

- Goal to give WASCs additional flexibility when developing their SIPs
- A WASC can decide to offer funding that is less than what an Infrastructure Program or Scientific Study proponent requested
- The Proponent must:
  - Agree to deliver the proposed scope with a reduced funding award, and
  - Describe to the satisfaction of the WASC that they will be successful filling the funding gap

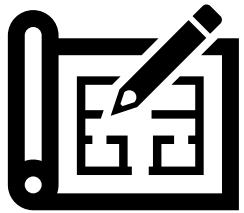


## Programming of Partial Funding

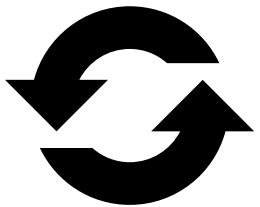


# WASC Roles & Responsibilities

## Other options for project evaluation



- The WASC may consider shifting a Project from the Infrastructure Program to the Technical Resources Program for refined/new concept development



- The WASC may request the proponent to bring a revised proposal back to the WASC for consideration in a future year





# WASC Roles & Responsibilities

## Evaluation of continuing projects

### Quarterly Progress/Expenditure Reports

- WASCs are responsible for reviewing quarterly progress reports submitted by project developers for funded projects to evaluate:
  - Changes in schedules, scopes, expected benefits
  - If efforts remain consistent with SCWP Goals

### Watershed Area Regional Program Progress Reports (WARPP)

- Staff will prepare a draft WARPP report on behalf of each WASC
- Each WASC will review and discuss the WARPP before submittal of the report to the ROC





# Roles & Responsibilities

## WASC members have the responsibilities identified in the WASC Operating Guidelines

- A. Select a Chair, Co-Chairs, and/or Vice-Chair as deemed prudent;
- B. Work with District staff to schedule and commit to meetings in advance;
- C. Regularly attend WASC meetings and conduct other WASC business. An absence of two consecutive meetings or more than three meetings in one year will be considered failure to attend meetings making the member eligible for removal as a member of the WASC;
- D. Communicate regularly with District staff via phone, electronic messaging, email, and other means of communication;
- E. Meet, confer, coordinate, collaborate, and cooperate with one another, in good faith, to carry out the responsibilities of the WASC;
- F. Share expertise and provide guidance, and information on those matters for which it has specific expertise;
- G. Participate in the development of Stormwater Investment Plans (SIP) so that the development of the SIPs benefits from various stakeholder perspectives;
- H. Consider findings and recommendations from the Regional Oversight Committee before submitting final recommended SIP;
- I. Collectively confirm Scoring Committee Members from the Board approved member lists of eligible candidates;
- J. Use discretion and good business judgment in discussing the affairs of the WASC with Non-WASC-related parties – any media related inquires shall be directed to the District;
- K. If intending to claim a stipend for attended meetings, submit certification that he/she is not otherwise being compensated per ARTICLE VI, Section 8 of Operating Guidelines.



# WASC Resources & Tools

## Resources

- [2022 Interim Guidance](#)
- [Partial Funding Guidance](#)
- [WASC Operating Guidelines](#)
- [Regional Program Funding Process Handbook](#)

### SCW Program 2022 Interim Guidance

#### Water Supply Guidance



#### Evaluating Water Supply Benefits at the WASC

As Watershed Area Steering Committees (WASCs) develop Stormwater Investments Plans (SIPs), they can benefit from the following strategies in determining the appropriateness of each Project's claim of providing, or not providing, Water Supply Benefits:

#### **Tools and strategies to evaluate Water Supply Benefits that WASC members should use during Project evaluation:**

- Read the justification provided in the application, submitted Feasibility Study, and scoring rubric about Water Supply Benefits claimed for the Project, including how the project creates locally available water supply.
- Where applicable, review applications for assurance that infiltrated water reaches an aquifer managed for beneficial use through demonstration of high infiltration potential or proximity to a water reclamation facility.
- During presentations by Project proponents, ask follow-up questions about the Water Supply Benefits claimed for the Project, as appropriate.

#### **Tools and strategies to evaluate Water Supply Benefits that WASC members can use at any time:**

- Ask Watershed Coordinator(s) to evaluate and report to the WASC how the people, public agencies, and other stakeholders would describe the preferred Water Supply Benefits in the Watershed Area (i.e., desired outcomes and watershed-specific goals).
- Invite informational presentations from agencies, organizations, and other stakeholders to better understand potential Water Supply Benefits sought and challenges faced in the Watershed Area.



# WASC Resources & Tools

## Tools

- SCW PORTAL
  - [Project Map](#)
  - [Dashboard](#)
  - [Reporting](#)
  - [SIP Tool](#)
- [Spatial Data Library](#)

SAFE CLEAN WATER PROGRAM

HOME DASHBOARD REPORTING APPLY

### Welcome to the Safe Clean Water Portal

Learn about Safe Water Program projects, benefits and expenditures. We are protecting public health and our environment while maximizing a cleaner, locally-controlled water supply.

Find a project

Search

Submitted Infrastructure Projects 2020-2021

- Upper Los Angeles River
- Central Santa Monica Bay
- Lower San Gabriel River
- Upper San Gabriel River
- Lower Los Angeles River
- Rio Hondo
- South Santa Monica Bay
- Santa Clara River
- North Santa Monica Bay

Safe Clean Water Program Watershed Areas

- Central Santa Monica Bay
- Lower Los Angeles River
- Lower San Gabriel River





# Discussion

Contact the program team at:

[www.SafeCleanWaterLA.org](http://www.SafeCleanWaterLA.org)

[SafeCleanWaterLA@pw.lacounty.gov](mailto:SafeCleanWaterLA@pw.lacounty.gov)

1-833-ASK-SCWP (1-833-275-7297)