



## **Franklin D. Roosevelt Park Regional Stormwater Capture Project**

### **○ Project Scope**

The project will divert urban and stormwater runoff from nearby unincorporated communities, into two infiltration galleries underneath the park and seven infiltration/dry wells on Whitsett Avenue. The project also includes above ground park improvements including a re-designed soccer field with artificial turf, education garden, Low-Impact-Development features, new picnic areas, and a new healthy court with children's playmounds and Americans with Disabilities-accessible exercise equipment.

### **○ Project Benefits**

The project will improve the quality of our rivers and ocean, increase our local water supply (Central Basin), provide community enhancement, and provide educational and outreach opportunities.

### **○ Project Location**

- Franklin D. Roosevelt Park (7600 Graham Ave, Los Angeles, CA)
  - Graham Ave and Nadeau St

### **○ Cost Estimate**

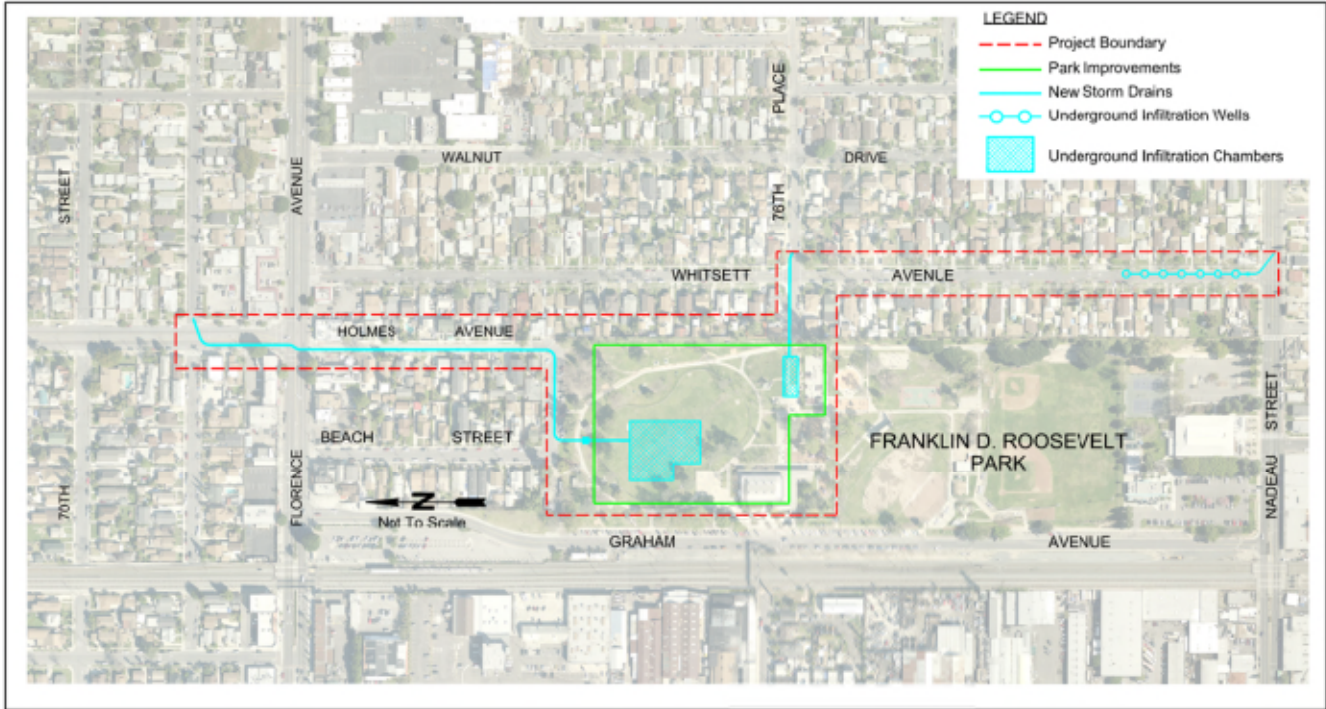
- Total Project Cost: \$13.5M
  - Grant Funding: \$2.05M
- Volume Captured: 8 Acre-Feet

### **○ Tentative Milestone Schedule**

- Summer 2018 – Advertise and Award
- Fall 2018 – Construction Start
- Fall 2019 – Construction Closeout



## Site Layout



## General Vicinity Map

