



## **Ladera Park Stormwater Capture Project**

### ○ **Project Scope**

The project will capture and infiltrate urban stormwater runoff from the unincorporated area of Ladera Heights. The Project will also include a water treatment to use stormwater runoff to irrigate a portion of the park. The project will also include a demonstration garden that will include above ground landscaping, low-impact-development features, and educational signage.

### ○ **Project Benefits**

The project will improve water quality by reducing pollutant such as bacteria and metals from entering the Ballona Creek and provide an alternate source of water for irrigating the County park facility.

### ○ **Project Location**

- Ladera Park (6027 Ladera Park Avenue, Los Angeles, CA 90056)
  - Near Slauson Ave and Ladera Park Avenue

### ○ **Cost Estimate**

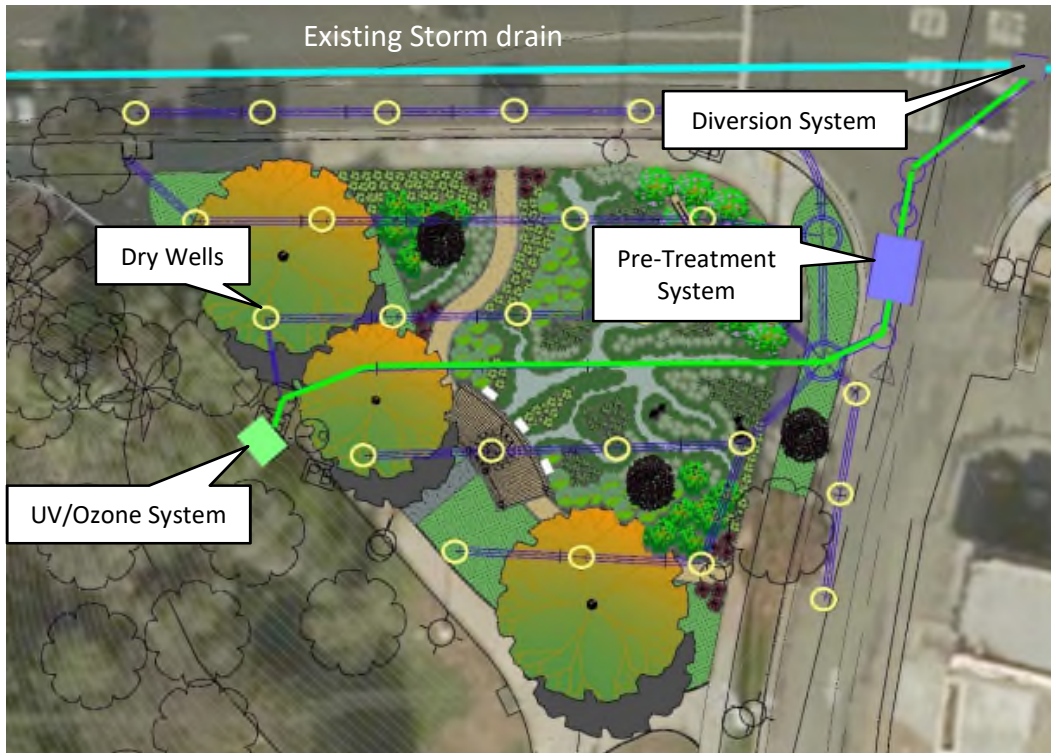
- Total Project Cost: \$9.5M
  - Grand Funding: 4.8M
- Volume Captured: 5.1 Acre-Feet

### ○ **Tentative Milestone Schedule**

- May 2018 – 100% Design Plans
- Late 2018 – Award Construction Contract
- Late 2019 – Complete Construction



## Site Layout



## General Vicinity Map

